

A dramatic sunset scene with a helicopter and police vehicles. The sky is filled with vibrant orange and yellow clouds. In the foreground, two Westchester County Police vehicles are parked on a grassy area. The vehicle on the left is a sedan, and the one on the right is a larger SUV. Both have their emergency lights on. In the background, a helicopter is flying over a body of water, and two small boats with blue lights are visible. The overall atmosphere is one of emergency response during a beautiful sunset.

Department of Public Safety

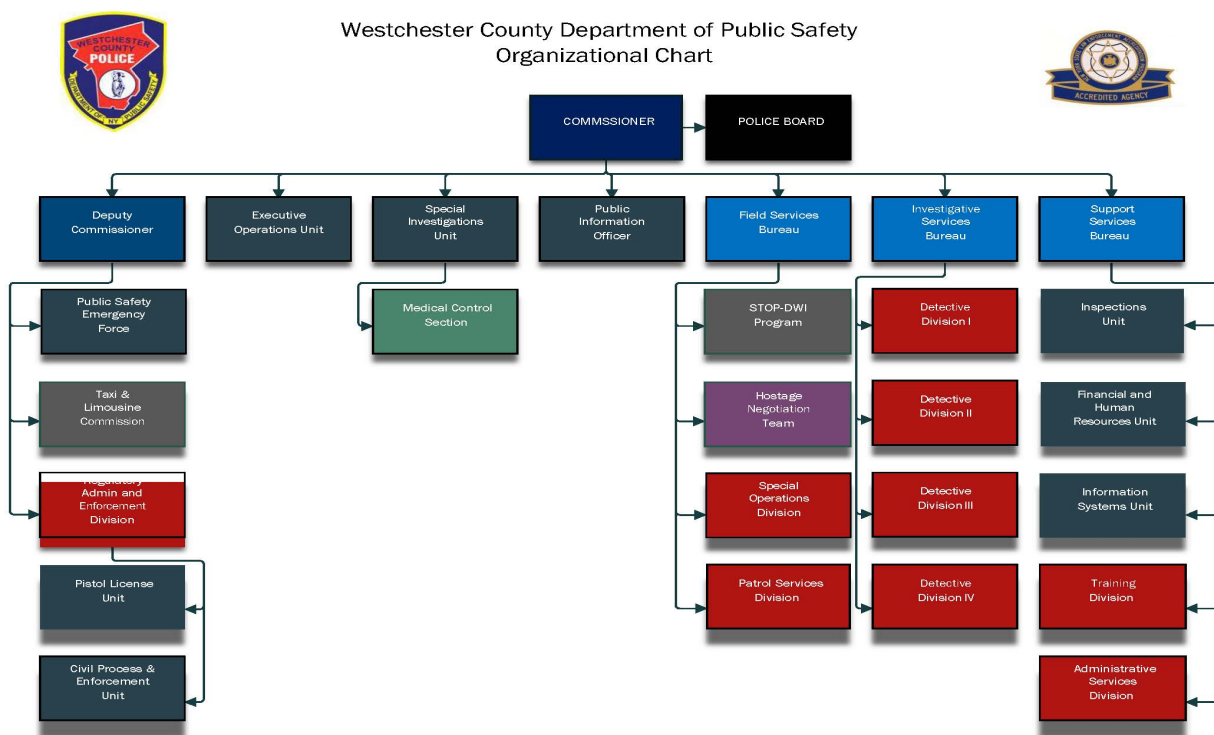
Monthly Statistics

December 2021

Commissioner Thomas A. Gleason

Table of Contents

MONTHLY OVERVIEW – DEPARTMENT WIDE	2
OFFICE OF THE COMMISSIONER.....	5
Special Investigations Unit.....	5
FIELD SERVICES BUREAU	6
Patrol Services Division	6
Special Operations Division	8
INVESTIGATIVE SERVICES BUREAU.....	10
OFFICE OF THE DEPUTY COMMISSIONER	13
Civil Division	14
Pistol Licensing Unit	14
SUPPORT SERVICES BUREAU	16



MONTHLY OVERVIEW – DEPARTMENT WIDE**Service Indicators**

	Dec 2020	Dec 2021	Net Change	% Change	YTD 2020	YTD 2021	Net Change	% Change
Calls for Service	9372	9899	527	5.6%	124571	130392	5821	4.7%
Traffic Stops	662	715	53	8.0%	9880	13786	3906	39.5%
Accident Reports	299	337	38	12.7%	3114	3411	297	9.5%
Dept Vehicle Accidents	6	1	-5	-83.3%	37	48	11	29.7%
Overtime Hrs.	12,701	14,008	1,308	10.3%	141,682	155,347	13664	9.6%

Summons

	Dec 2020	Dec 2021	Net Change	% Change	YTD 2020	YTD 2021	Net Change	% Change
Field Appearance Tickets	7	23	16	228.6%	614	607	-7	-1.1%
Simplified Traffic Informations	840	866	26	3.1%	12629	18553	5924	46.9%
Taxi & Limo Comm Violations	47	48	1	2.1%	1460	1451	-9	-0.6%
Marine	0	0	0		40	43	3	7.5%
Total	894	937	43	4.8%	14743	20654	5911	40.1%

Monthly Overview (cont.)UCR Arrests

	Dec 2020	Dec 2021	Net Change	% Change	YTD 2020	YTD 2021	Net Change	% Change
Murder (1a)	0	0	0		1	4	3	300.0%
Forcible Rape (2.1)	0	0	0		1	2	1	100.0%
Robbery (3)	2	0	-2	-100.0%	16	16	0	0.0%
Fel Assault (4)	2	2	0	0.0%	31	28	-3	-9.7%
Burglary (5.1)	0	1	1		28	17	-11	-39.3%
Larceny (6)	6	11	5	83.3%	145	84	-61	-42.1%
Motor Veh Theft (7)	2	0	-2	-100.0%	12	22	10	83.3%
Total	12	14	2	16.7%	234	173	-61	-26.1%

Other Arrests

	Dec 2020	Dec 2021	Net Change	% Change	YTD 2020	YTD 2021	Net Change	% Change
Narcotics	14	5	-9	-64.3%	155	63	-92	-59.4%
Dangerous Weapon	3	4	1	33.3%	20	33	13	65.0%
DWI/ DWAI	3	19	16	533.3%	74	201	127	171.6%
Total	20	28	8	40.0%	249	297	48	19.3%

Monthly Overview (cont.)UCR Crimes

	Dec 2020	Dec 2021	Net Change	% Change	YTD 2020	YTD 2021	Net Change	% Change
Murder (1a)	0	0	0		0	1	1	
Forcible Rape (2.1)	0	0	0		0	0	0	
Robbery	1	1	0	0.0%	3	6	3	100.0%
Fel Assault (4)	0	1	1		19	6	-13	-68.4%
Burglary (5.1)	1	2	1	100.0%	13	7	-6	-46.2%
Larceny (6)	12	20	8	66.7%	140	109	-31	-22.1%
Motor Veh Theft (7)	1	0	-1	-100.0%	5	6	1	20.0%
Total	15	24	9	60.0%	180	135	-45	-25.0%

Arrests Dept. Wide

	Dec 2020	Dec 2021	Net Change	% Change	YTD 2020	YTD 2021	Net Change	% Change
Felony	35	34	-1	-2.9%	450	474	24	5.3%
Misdemeanor	36	50	14	38.9%	638	690	52	8.2%
Violation	1	0	-1	-100.0%	33	18	-15	-45.5%
Infraction	2	1	-1	-50.0%	37	42	5	13.5%
Total	74	85	11	14.9%	1158	1224	66	5.7%

OFFICE OF THE COMMISSIONER

Thomas A. Gleason

Special Investigations Unit

Lt Jeffrey Weiss

Monthly Indicators

	Dec 2020	Dec 2021	Net Change	% Change	YTD 2020	YTD 2021	Net Change	% Change
Civilian Complaints	0	0	0		13	14	1	7.7%
Command Disciplines	0	0	0		7	5	-2	-28.6%
Administrative Complaint	0	2	2		9	10	1	11.1%
SIU Cases	0	0	0		4	8	4	100.0%
LIT Cases	0	0	0		12	9	-3	-25.0%
OPR Cases	0	0	0		2	2	0	0.0%
LOD Cases	3	8	5	166.7%	60	73	13	21.7%
Admin. Entries	8	2	-6	-75.0%	124	49	-75	-60.5%

Admin entries were discontinued for part of 2018 when AIM was introduced

Medical Control

	Dec 2020	Dec 2021	Net Change	% Change	YTD 2020	YTD 2021	Net Change	% Change
Officers Out	9	6	-3	-33.3%			0	
Days Lost	198	152	-46	-23.2%	2192	1891	-301	-13.7%

FIELD SERVICES BUREAU

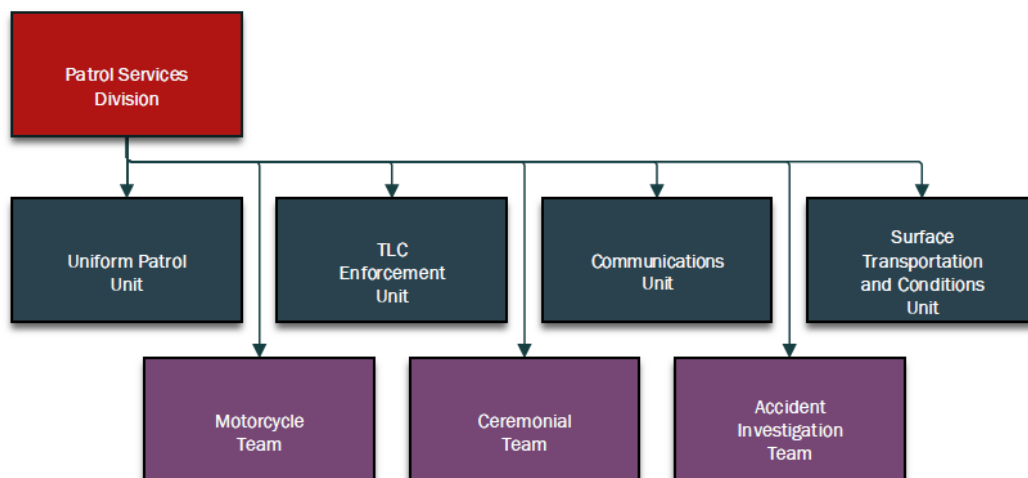
Chief Inspector Christopher Calabrese

Patrol Services Division

Captain James Greer

Monthly Indicators

	Dec 2020	Dec 2021	Net Change	% Change	YTD 2020	YTD 2021	Net Change	% Change
Events	9372	9899	527	5.6%	124571	130392	5821	4.7%
Summons	1046	1010	-36	-3.4%	13377	21804	8427	63.0%
Arrests	34	43	9	26.5%	467	607	140	30.0%
DWI	3	19	16	533.3%	74	201	127	171.6%
Total Arrests	37	62	25	67.6%	541	808	267	49.4%
Communications Calls Received	11465	9352	-2113	-18.4%	110122	129504	19382	17.6%
Communications 911 Calls	1487	1829	342	23.0%	17172	21099	3927	22.9%
Accidents	299	337	38	12.7%	3114	3411	297	9.5%
PSEF Details	1	2	1	100.0%	43	58	15	34.9%
Parkways								
Events	1662	1885	223	13.4%	19155	26808	7653	40.0%
Summons	727	725	-2	-0.3%	8973	14878	5905	65.8%
Arrests	33	52	19	57.6%	335	650	315	94.0%
Municipal								
Events	1716	2527	811	47.3%	21982	26217	4235	19.3%
Summons	209	146	-63	-30.1%	2195	5126	2931	133.5%
Arrests	3	7	4	133.3%	96	101	5	5.2%
Airport								
Events	883	1863	980	111.0%	7777	21654	13877	178.4%
Summons	1	34	33	3300.0%	384	789	405	105.5%
Arrests	0	2	2		3	8	5	166.7%
Parks								
Events	635	534	-101	-15.9%	14901	13729	-1172	-7.9%
Summons	10	0	-10	-100.0%	440	300	-140	-31.8%
Arrests	0	0	0		2	17	15	750.0%

Field Services, Patrol Services (cont.)**Personnel Assigned****Discovery Workload**

	Dec 2020	Dec 2021	Diff		Dec 2020	Dec 2021
Civilian	8	8	0	New Patrol Cases	21	33
Commo Op	14	14	0	Closed Patrol Cases	23	35
Sr Commo Op	5	5	0	Closed Multi Media Requests	92	134
Commo PO	0	2	2	OT Hours	0	4
Police Officer	123	123	0	<u>Discovery Staffing</u>		-
Detective	1	1	0	-	-	-
Sergeant	22	28	6			
Lieutenant	10	9	-1	Lt.'s	1	
Captain	1	1	0	Sgt.'s	0	
Total	184	191	7	P.O.'s	1	
Rest./Light Duty	1	2	1	Civilians	1	
Ext Leave	7	1	-6	Total	3	

Field Services Bureau

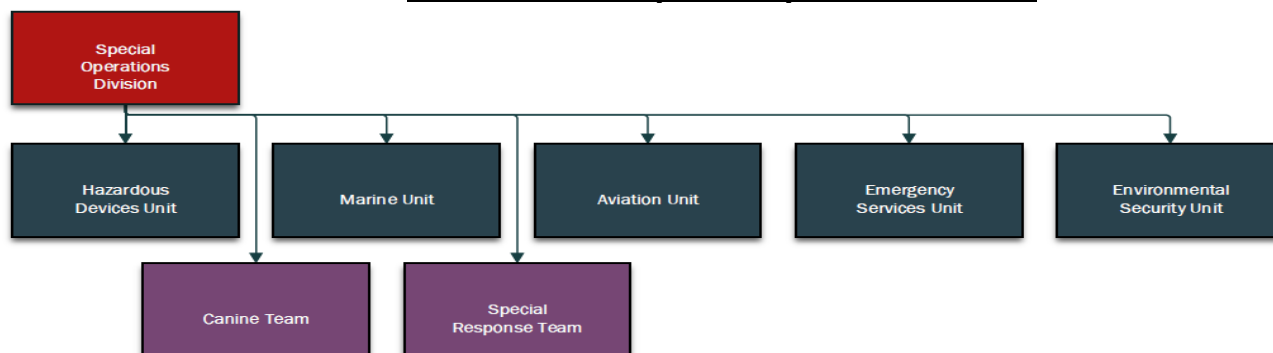
Chief Inspector Christopher Calabrese

Special Operations Division

Capt. James Luciano

Monthly Indicators

	Dec 2020	Dec 2021	Net Change	% Change	YTD 2020	YTD 2021	Net Change	% Change
Aviation								
Missions	27	34	7	25.9%	496	530	34	6.9%
Events	643	802	159	24.7%	16661	13006	-3655	-21.9%
HDU								
Deployments	2	5	3	150.0%	85	49	-36	-42.4%
Events	62	14	-48	-77.4%	414	180	-234	-56.5%
K9								
Narco	5	8	3	60.0%	94	95	1	1.1%
Tracking	10	12	2	20.0%	103	115	12	11.7%
Arson	10	9	-1	-10.0%	51	57	6	11.8%
Explosive	166	122	-44	-26.5%	1862	2112	250	13.4%
SRT								
Deployments	3	1	-2	-66.7%	22	30	8	36.4%
Events	6	4	-2	-33.3%	59	63	4	6.8%
HNT -Chief Insp Office								
Deployments	1	1	0	0.0%	12	6	-6	-50.0%
Marine								
Events	172	179	7	4.1%	3329	4126	797	23.9%
Summons	0	0	0		54	86	32	59.3%
Vessel Inspections	0	0	0		163	91	-72	-44.2%
Search and Rescue	2	0	-2	-100.0%	101	119	18	17.8%
Environmental								
Events	50	52	2	4.0%	533	633	100	18.8%

Field Services, Special Operations (cont.)

Flight Time	Air 2	Air 3	Total
Dec 2021	29.2	0	29.2
YTD 2021	273.3	129.2	402.5

Personnel Assigned	2020	2021	Diff
Captain	1	1	0
Civilian	1	1	0
Police Officer	7	8	1
Detective	5	4	-1
Sergeant	3	3	0
Lieutenant	1	1	0
Total	18	18	0

SRT Call Outs	Dec 2021	YTD 2021
Armed Persons	0	8
Barricades/EDP's	0	4
Warrant Executions	0	3
Dignitary/Escorts	0	4
Crit Infra Key Resource Patrols	1	4
OJ Mass Gatherings	0	1
Suspect/K-9 Search	0	6
Bldg. Search	0	0
Totals	1	30

ESU Activity	Dec 2021	YTD 2021
MVA-Prop	4	40
MVA-Inj	18	131
MVA-Extrication	1	17
EDP	5	67
Aided	7	98
Marine Assist	1	18
Haz Mat	0	15
Lock Out	2	42
K-9 Assist	8	56
HDU Assist	1	8
Bldg./Area Search	0	10
Tree Removal	1	35
Scene Support	18	113
Tech Rescue	1	7
Animal Case	1	30
Arrests	0	630
Totals	68	1317

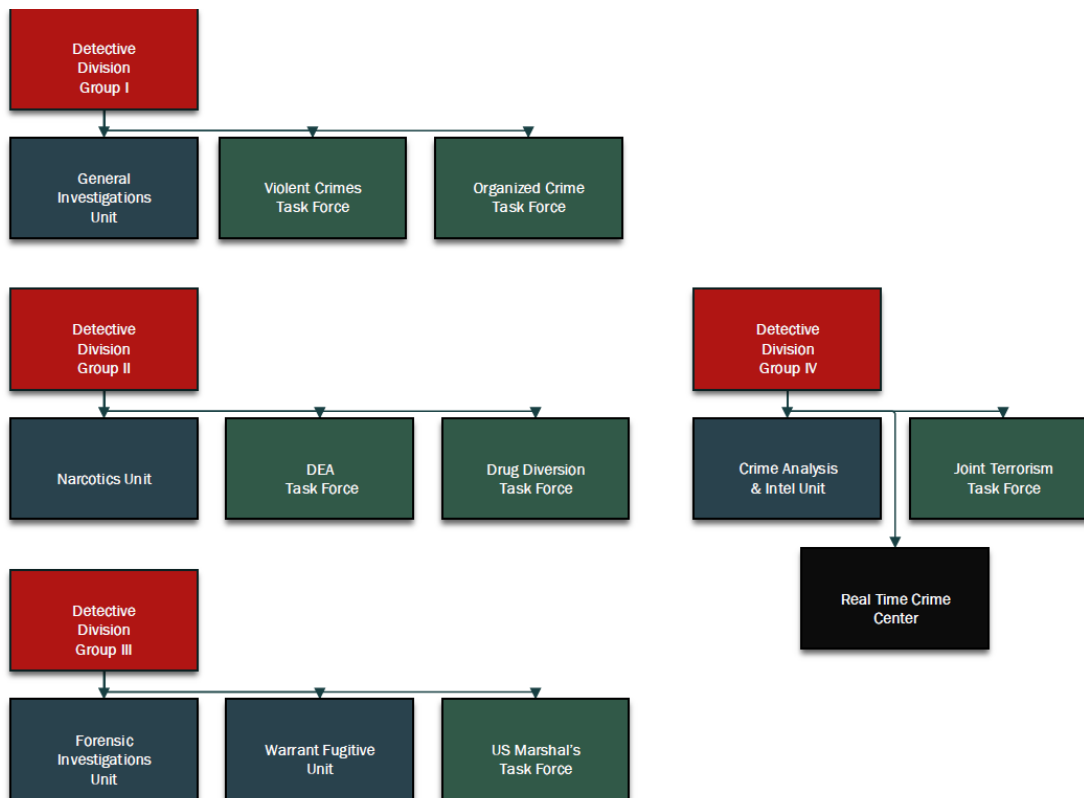
INVESTIGATIVE SERVICES BUREAU

Chief Inspector John Hodges

Detective Division
Monthly Indicators

Captain Mark Busche

	Dec 2020	Dec 2021	Net Change	% Change	YTD 2020	YTD 2021	Net Change	% Change
Ballistics								
Cases	30	26	-4	-13.3%	395	382	-13	-3.3%
Firearms Examined	22	25	3	13.6%	241	265	24	10.0%
FIU								
Cases	27	19	-8	-29.6%	350	306	-44	-12.6%
Crime Scenes	1	7	6	600.0%	46	63	17	37.0%
Dig Evidence	1	1	0	0.0%	32	33	1	3.1%
GIU								
Cases	105	120	15	14.3%	1161	1241	80	6.9%
Arrests	20	16	-4	-20.0%	307	313	6	2.0%
Juveniles	11	3	-8	-72.7%	87	65	-22	-25.3%
Narco								
Cases	1	3	2	200.0%	38	39	1	2.6%
Arrests	14	1	-13	-92.9%	50	48	-2	-4.0%
WFU								
Cases	31	41	10	32.3%	450	480	30	6.7%
Arrests	67	14	-53	-79.1%	170	218	48	28.2%
RTC DATA	(New Cases)							
RTC	640	783	143	22.3%	7459	7516	57	0.8%
JTTF	3	0	-3	-100.0%	82	76	-6	-7.3%
HIDTA	35	4	-31	-88.6%	653	326	-327	-50.1%
RSO	26	33	7	26.9%	272	563	291	107.0%
Arrests	15	21	6	40.0%	203	307	104	51.2%

Investigative Services, Detective Division (cont.)

	2020	2021	Net
Civilians	3	1	-2
Police Officer	4	4	0
Detective	53	50	-3
Sergeant	6	6	0
Lieutenant	4	4	0
Captain	1	1	0
Total	68	65	-3
Rest./Light Duty	0	0	0
Ext Leave	2	0	-2
Injured	0	0	0

Investigative Services, Detective Division (cont.)

RTC JOB	Dec 2021	YTD 2021
Amber Alert	0	0
RTC Request	99	670
RTC-3SI Activation	2	7
RTC-Alert Hot List	16	191
RTC-Broadcast	16	157
RTC-Bulletin	141	1754
RTC-Daily Intel Report	30	607
RTC-Facial Recognition	18	154
RTC-HIDTA Request	4	188
RTC-Hot List Entry request	47	363
RTC-Intel Report	16	206
RTC-Jewelry Search	0	27
RTC-LPR Hit-File 1	131	1308
RTC-LPR Hit-Terrorist	16	434
RTC-LPR Hit-Warrant	8	175
RTC-LPR Hotline	2	213
RTC-LPR Plate Search	81	971
RTC-Patrol Assist	8	152
RTC-Pattern Burglary	1	25
RTC-Pattern Car Larceny	0	1
RTC-Pattern Larceny	0	3
RTC-Pattern Robbery	0	3
RTC-Photo Array	3	60
RTC-Tips	10	73
RTC-Video Request	12	138
RTC-Workup Request	22	56
Totals	683	7936

Investigative Services, Detective Division (cont.)

Case Management	Dec 2021	Dec 2021	Dec 2021	Percentage of OJ Cases
Unit	Active Cases	Active OJ Cases	Total Cases Discovery Provided	
GIU	323	1	27	0.31%
FIU	98	75	18	76.53%
Ballistics	82	77	35	93.90%
Digital Evidence	7	0	1	0.00%
Narcotics	77	61	0	79.22%
Warrants	1152	827	1	71.79%
RSO Tracking	109			
Division Totals	1848	1041	82	56.33%

Office of the Deputy Commissioner

Deputy Commissioner Terrance Raynor

Civil Division

Captain Frank Donavan

Monthly Indicators

	Dec 2020	Dec 2021	Net Change	% Change	YTD 2020	YTD 2021	Net Change	% Change
Arrests	0	1	1		5	4	-1	-20.0%
Evictions	3	0	-3	-100.0%	117	14	-103	-88.0%
Summons	36	52	16	44.4%	485	640	155	32.0%
Executions	174	305	131	75.3%	2489	2957	468	18.8%
Total Monies Received	\$755,278	\$767,443	\$12,165	1.6%	9,616,406	9,764,067	147,661	1.5%
Fees & Poundage to County	\$59,732	\$103,179	\$43,447	72.7%	\$777,743	\$676,767	-\$100,976	-13.0%

Pistol Licensing Unit

Monthly Indicators

	Dec 2020	Dec 2021	Net Change	% Change	YTD 2020	YTD 2021	Net Change	% Change
New Application	110	85	-25	-22.7%	706	1316	610	86.4%
Restriction Amendment	19	7	-12	-63.2%	290	213	-77	-26.6%
Renewal Application	69	154	85	123.2%	3229	2029	-1200	-37.2%
Weapons Recovered	30	12	-18	-60%	369	223	-146	-39.6%
Delinquent Holders	10904	10898	-6	-0.1%	10904	10898	-6	-0.1%

Office of the Deputy Commissioner (cont.)

Personnel Assigned			(Civil and Pistol)
	2020	2021	Diff
Civilian	10	11	1
Police Officer	9	5	-4
Detective	4	6	2
Sergeant	2	2	0
Lieutenant	0	0	0
Captain	1	1	0
Total			0
Rest/Lgt Duty	1	1	0
Ext Leave	1	1	0
Injured	0	0	0

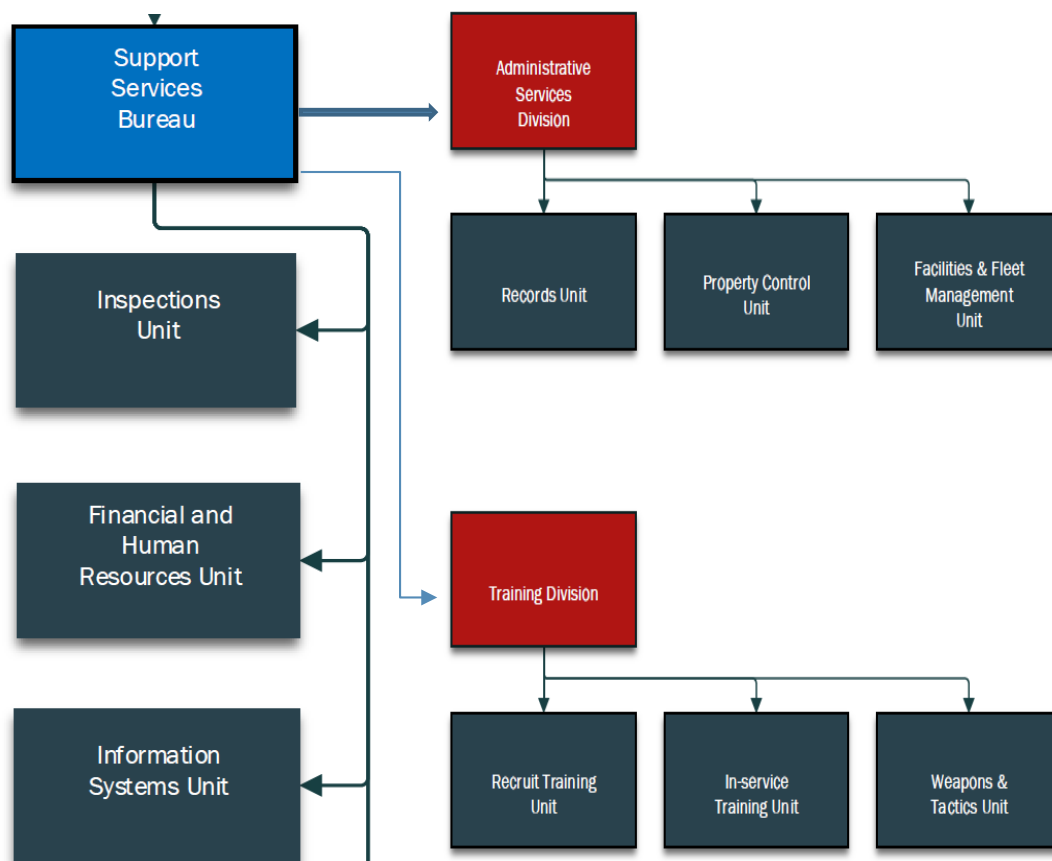
Support Services Bureau

Captain William McGuinness

Lt. Maria Meliti
Lt. Michael Cindrich
Lt. Nicholas Alongi

Monthly Indicators

	Dec 2020	Dec 2021	Net Change	% Change	YTD 2020	YTD 2021	Net Change	% Change
Academy								
Student Training Days	1,380	1,227	-153	-11.1%	10,960	21,930	10970	100.1%
UIST Students Trained	20	24	4	20.0%	788	1251	463	58.8%
Courses Offered	20	43	23	115.0%	403	482	79	19.6%
Other Event Attendee Days	0	0	0		0	0	0	
WCPD students trained	29	132	103	355.2%	1334	1905	571	42.8%
Other Dept. Students trained	272	434	162	59.6%	5883	6584	701	11.9%
Total Students Trained	301	566	265	88.0%	7217	8489	1272	17.6%
Property								
Items Received	81	137	56	69.1%	1328	1,524	196	14.8%
Items Released/Destroyed	24	77	53	220.8%	1,110	1,230	120	10.8%
Cash Received	\$41,042	\$829	-\$40,214	-98.0%	\$103,452	\$44,139	-\$59,313	-57.3%
Cash Released	\$0	-\$8,850	-\$8,850		-\$834	-\$48,383	-\$47,550	5703.6%
Impounds Received HQ	7	11	4	57.1%	76	118	42	55.3%
Impounds Released HQ	5	6	1	20.0%	97	109	12	12.4%
Impound Inventory HQ	30	39	9	30.0%	127	148	21	16.5%
Records								
FOIL Requests	43	39	-4	-9.3%	329	423	94	28.6%
Subpoenas Civil	1	1	0	0.0%	13	12	-1	-7.7%
Leaving the Scene Cases	40	39	-1	-2.5%	338	388	50	14.8%
Local Warrants Received	1	18	17	1700.0%	129	244	115	89.1%
Local Warrants Returned	10	18	8	80.0%	129	345	216	167.4%
Impound Releases	61	79	18	29.5%	601	1140	539	89.7%
Case Reports Processed	183	243	60	32.8%	2192	2719	527	24.0%
Accident Report Fees Rec'd	\$3,525	\$4,650	\$1,125	31.9%	\$38,085	\$47,655	\$9,570	25.1%
Bail Received	\$0	\$0	\$0		\$0	\$102	\$102	

Support Services Bureau, (cont.)

	2020	2021	Diff
Civilian	19	16	-3
Police Officer	5	6	1
Detective	3	4	1
Sergeant	4	4	0
Lieutenant	3	3	0
Captain	1	1	0
Total	35	34	1
Rest./Light Duty	0	0	0
Ext Leave	0	0	0

Discovery Compliance - Workload
Cases that Required Discovery

	Dec 2021	YTD 2021
Records	34	383
PCU	8	62
Other Dept. Students Trained		
As Percentage of Total Students		
Month	Year	
77%	78%	