

Department of Public Safety

Monthly Report



April 2022

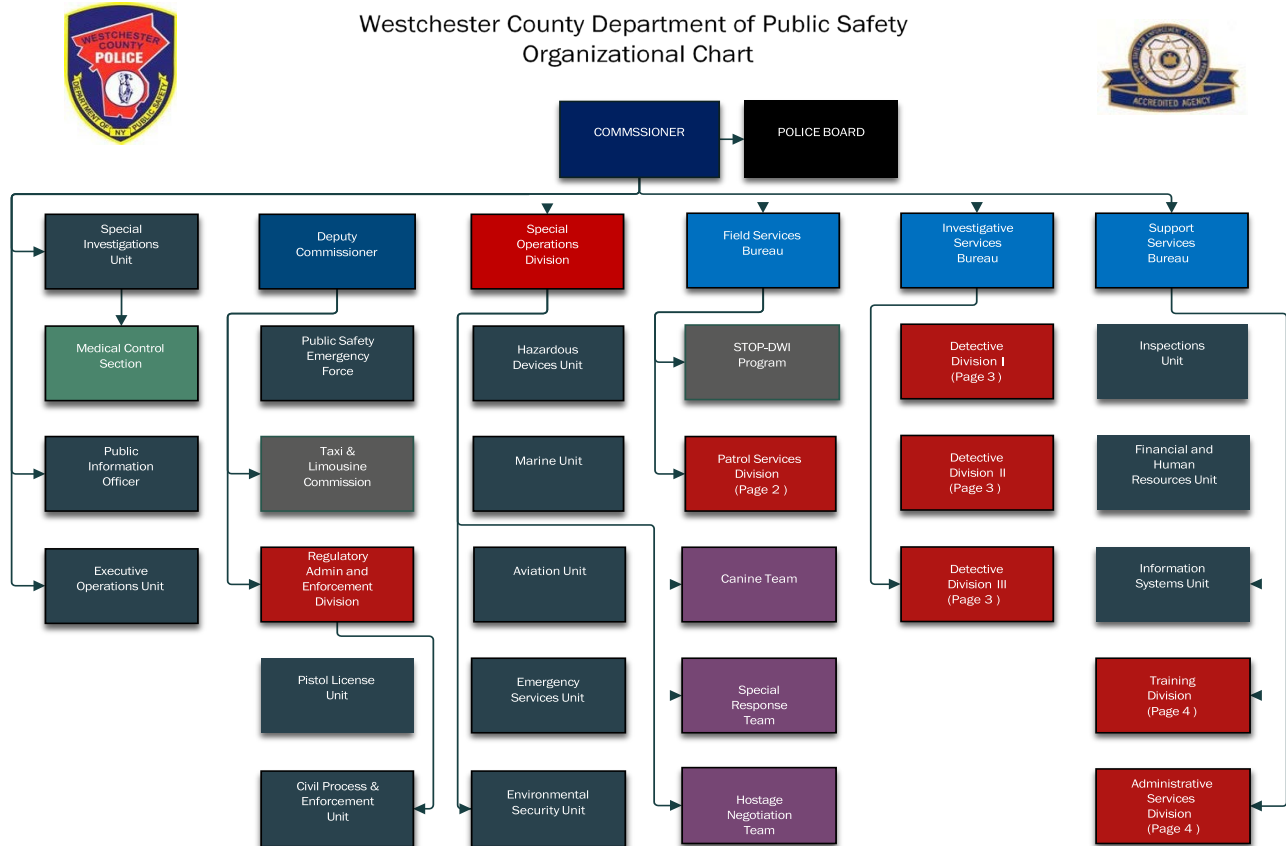
Commissioner Thomas A. Gleason

MONTHLY REPORT

The Department of Public Safety is constantly reviewing its performance with respect to furthering its mission in a professional and efficient manner, consistent with the needs of the residents and visitors to Westchester County. The Department notes the following items of interest from the past month.

Table of Contents

MONTHLY OVERVIEW – DEPARTMENT WIDE	2
OFFICE OF THE COMMISSIONER	6
Special Investigations Unit	6
SPECIAL OPERATIONS DIVISION	7
FIELD SERVICES BUREAU	9
Patrol Services Division	10
INVESTIGATIVE SERVICES BUREAU	12
OFFICE OF THE DEPUTY COMMISSIONER	16
SUPPORT SERVICES BUREAU	18



MONTHLY OVERVIEW – DEPARTMENT WIDE

Service Indicators

	Apr 2021	Apr 2022	Net Change	% Change	YTD 2021	YTD 2022	Net Change	% Change
Calls for Service	10481	10968	487	4.6%	40964	41818	854	2.1%
Traffic Stops	1304	1323	19	1.5%	5141	4629	-512	-10.0%
Accident Reports	288	304	16	5.6%	982	1084	102	10.4%
Dept Vehicle Accidents	4	5	1	25.0%	17	27	10	58.8%
Overtime Hrs.	13,915	13,698	-217	-1.6%	50,904	45,965	-4939	-9.7%

Summons

	Apr 2021	Apr 2022	Net Change	% Change	YTD 2021	YTD 2022	Net Change	% Change
Field Appearance Tickets	10	32	22	220.0%	134	112	-22	-16.4%
Simplified Traffic Informations	1509	1508	-1	-0.1%	6140	5228	-912	-14.9%
Taxi & Limo Comm Violations	268	222	-46	-17.2%	1088	1175	87	8.0%
Marine	4	0	-4	-100.0%	4	0	-4	-100.0%
Total	1791	1762	-29	-1.6%	7366	6515	-851	-11.6%

Monthly Overview (cont.)UCR Arrests

	Apr 2021	Apr 2022	Net Change	% Change	YTD 2021	YTD 2022	Net Change	% Change
Murder (1a)	1	0	-1	-100.0%	1	1	0	0.0%
Forcible Rape (2.1)	0	0	0		0	0	0	
Robbery (3)	1	2	1	100.0%	2	3	1	50.0%
Fel Assault (4)	1	2	1	100.0%	8	15	7	87.5%
Burglary (5.1)	0	0	0		5	4	-1	-20.0%
Larceny (6)	7	10	3	42.9%	29	54	25	86.2%
Motor Veh Theft (7)	1	0	-1	-100.0%	8	3	-5	-62.5%
Total	11	14	3	27.3%	53	80	27	50.9%

Other Arrests

	Apr 2021	Apr 2022	Net Change	% Change	YTD 2021	YTD 2022	Net Change	% Change
Narcotics	7	12	5	71.4%	22	28	6	27.3%
Dangerous Weapon	6	13	7	116.7%	9	29	20	222.2%
DWI/ DWAI	14	21	7	50.0%	62	75	13	21.0%
Total	27	46	19	70.4%	93	132	39	41.9%

Monthly Overview (cont.)**UCR Crimes**

	Apr 2021	Apr 2022	Net Change	% Change	YTD 2021	YTD 2022	Net Change	% Change
Murder (1a)	0	0	0		0	0	0	
Forcible Rape (2.1)	0	0	0		0	0	0	
Robbery	1	0	-1	-100.0%	1	0	-1	-100.0%
Fel Assault (4)	1	0	-1	-100.0%	1	1	0	0.0%
Burglary (5.1)	3	0	-3	-100.0%	3	1	-2	-66.7%
Larceny (6)	4	9	5	125.0%	33	52	19	57.6%
Motor Veh Theft (7)	1	0	-1	-100.0%	3	3	0	0.0%
Total	10	9	-1	-10.0%	41	57	16	39.0%

Arrests Dept. Wide

	Apr 2021	Apr 2022	Net Change	% Change	YTD 2021	YTD 2022	Net Change	% Change
Felony	41	57	16	39.0%	154	225	71	46.1%
Misdemeanor	53	72	19	35.8%	230	241	11	4.8%
Violation	3	0	-3	-100.0%	5	3	-2	-40.0%
Infraction	-1	3	4	-400.0%	8	14	6	75.0%
Total	96	132	36	37.5%	397	483	86	21.7%

Department Wide Overtime Analysis

	Total Overtime YTD	(-) Reimbursable	Net Overtime	% YTD Allotment	2022 Allotment	2021 Allotment	2021 Actual	Last Year Percentage
Commissioner	186		186	39.5%	470	800	231	28.8%
Dep Commissioner	24		24	4.7%	513	500	125	25.0%
Patrol Services	25,296		25,296	39.3%	64,355	60,623	26,256	43.3%
Special Operations	6,015		6,015	39.1%	15,403	14,490	6,973	48.1%
Invest. Services	10,401		10,401	63.2%	16,461	15,784	6,596	41.8%
Support Services	3,314		3,314	63.6%	5,210	4,137	984	23.8%
Total OT Hours	45,236	0	45,236	44.2%	102,412	96,334	41,164	42.7%
				Last Year Reimbursable	43,453			

							Month	YTD 2022	
							Discovery Compliance	38	273
	Total Overtime YTD	(-) Reimbursable	Net Overtime	% YTD Allotment	2020 Allotment	COVID-19 OT	336	2677	
If Reimbursed OT Factored	45,236	15,406	29,830	29%	102,412	Civil Unrest	0	0	
Reimbursable Breakdown (Including COVID)						FOIL OT	0	35	

Not on Tax Levy		Offsets Tax Levy	
Municipal	1,007	Inter-Dept	7,555
Grants	1,802	Outside	1,678
Sum	2,809	Parks & Playland	687
		Sum	9,920

OFFICE OF THE COMMISSIONER

Thomas A. Gleason

Special Investigations Unit

Lt Jeffrey Weiss

Monthly Indicators

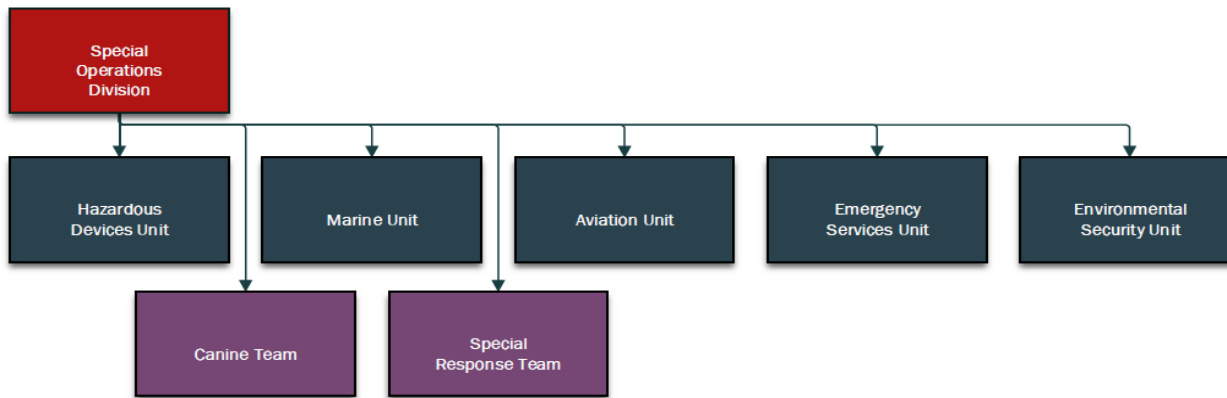
	Apr 2021	Apr 2022	Net Change	% Change	YTD 2021	YTD 2022	Net Change	% Change
Civilian Complaints	2	1	-1	-50.0%	5	3	-2	-40.0%
Command Disciplines	0	2	2		1	2	1	100.0%
Administrative Complaint	0	1	1		2	6	4	200.0%
SIU Cases	0	0	0		7	1	-6	-85.7%
LIT Cases	1	2	1	100.0%	4	7	3	75.0%
OPR Cases	0	1	1		0	3	3	
LOD Cases	1	5	4	400.0%	17	28	11	64.7%
Admin. Entries	5	4	-1	-20.0%	19	20	1	5.3%

Medical Control

	Apr 2021	Apr 2022	Net Change	% Change	YTD 2021	YTD 2022	Net Change	% Change
Officers Out	7	5	-2	-28.6%			0	
Days Lost	164	92	-72	-43.9%	736	463	-273	-37.1%

SPECIAL OPERATIONS DIVISION**Chief Inspector James Luciano****Lt. Paul Cusano****Monthly Indicators**

	Apr 2021	Apr 2022	Net Change	% Change	YTD 2021	YTD 2022	Net Change	% Change
Aviation								
Missions	31	26	-5	-16.1%	106	155	49	46.2%
Events	875	1064	189	21.6%	4066	4981	915	22.5%
HDU								
Deployments	2	8	6	300.0%	13	26	13	100.0%
Events	50	21	-29	-58.0%	172	67	-105	-61.0%
K9								
Narco	8	10	2	25.0%	29	27	-2	-6.9%
Tracking	6	8	2	33.3%	24	29	5	20.8%
Arson	0	9	9		24	27	3	12.5%
Explosive	155	130	-25	-16.1%	674	657	-17	-2.5%
SRT								
Deployments	0	5	5		3	11	8	266.7%
Events	3	10	7	233.3%	14	29	15	107.1%
HNT -Chief Insp Office								
Deployments	0	2	2		0	5	5	
Marine								
Events	391	426	35	9.0%	1232	1215	-17	-1.4%
Summons	4	3	-1	-25.0%	4	3	-1	-25.0%
Vessel Inspections	6	1	-5	-83.3%	6	1	-5	-83.3%
Search and Rescue	5	5	0	0.0%	14	10	-4	-28.6%
ESU								
Deployments	52	72	20	38.5%	154	236	82	53.2%
Events	54	75	21	38.9%	162	245	83	51.2%
Environmental								
Events	68	50	-18	-26.5%	199	195	-4	-2.0%

Special Operations (cont.)

Personnel Assigned	2021	2022	Diff
Captain	1	1	0
Civilian	1	1	0
Police Officer	7	9	2
Detective	5	4	-1
Sergeant	3	4	1
Lieutenant	1	1	0
Total	18	20	2

SRT Call Outs	Apr 2022	YTD 2022
Armed Persons	0	0
Barricades/EDP's	3	3
Warrant Executions	1	4
Dignitary/Escorts	0	0
Crit Infra Key Resource Patrols	1	1
OJ Mass Gatherings	0	1
Suspect/K-9 Search	0	2
Bldg. Search	0	0
Totals	5	11

Special Operations (cont.)

Flight Time	Air 2	Air 3	Total
Apr 2022	2.2	41.8	44
YTD 2022	19.2	159.8	179

FIELD SERVICES BUREAU

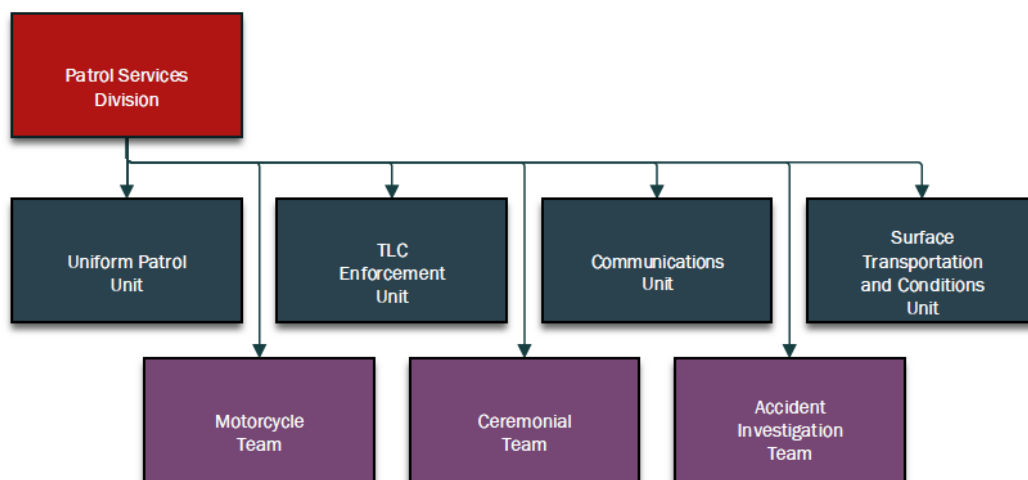
Chief Inspector Christopher Calabrese

Patrol Services Division

Captain James Greer

Monthly Indicators

	Apr 2021	Apr 2022	Net Change	% Change	YTD 2021	YTD 2022	Net Change	% Change
Events	10481	10968	487	4.6%	40964	41818	854	2.1%
Summons	1733	1767	34	2.0%	7365	6402	-963	-13.1%
Arrests	42	51	9	21.4%	175	221	46	26.3%
DWI	14	21	7	50.0%	62	75	13	21.0%
Total Arrests	53	72	19	35.8%	237	296	59	24.9%
Communications Calls Received	8795	9678	883	10.0%	37879	37952	73	0.2%
Communications 911 Calls	1413	1641	228	16.1%	5343	6191	848	15.9%
Accidents	288	304	16	5.6%	982	1084	102	10.4%
PSEF Details	7	1	-6	-85.7%	10	14	4	40.0%
Parkways								
Events	1931	2484	553	28.6%	7748	9069	1321	17.0%
Summons	1174	1166	-8	-0.7%	5011	4221	-790	-15.8%
Arrests	45	63	18	40.0%	208	252	44	21.2%
Municipal								
Events	1943	2473	530	27.3%	7794	10120	2326	29.8%
Summons	325	284	-41	-12.6%	1458	879	-579	-39.7%
Arrests	9	6	-3	-33.3%	24	30	6	25.0%
Airport								
Events	1610	1835	225	14.0%	6396	7021	625	9.8%
Summons	22	126	104	472.7%	210	437	227	108.1%
Arrests	0	1	1		2	3	1	50.0%
Parks								
Events	865	697	-168	-19.4%	2645	2403	-242	-9.1%
Summons	18	11	-7	-38.9%	53	20	-33	-62.3%
Arrests	0	0	0		0	0	0	

Field Services, Patrol Services (cont.)**Personnel Assigned****Discovery Workload**

	Apr 2021	Apr 2022	Diff		Apr 2021	Apr 2022
Civilian	8	9	1	New Patrol Cases	36	35
Commo Op	14	14	0	Closed Patrol Cases	30	29
Sr Commo Op	5	5	0	Closed Multi Media Requests	143	137
Commo PO	0	2	2	OT Hours	14.5	0
Police Officer	125	118	-7	<u>Discovery Staffing</u>		-
Detective	1	1	0	-	-	-
Sergeant	22	26	4			
Lieutenant	10	10	0	Lt.'s	1	
Captain	1	1	0	Sgt.'s	0	
Total	186	186	0	P.O.'s	1	
Rest./Light Duty	1	7	6	Civilians	1	
Ext Leave	0	2	2	Total	3	
Injured	0	1	1			

INVESTIGATIVE SERVICES BUREAU

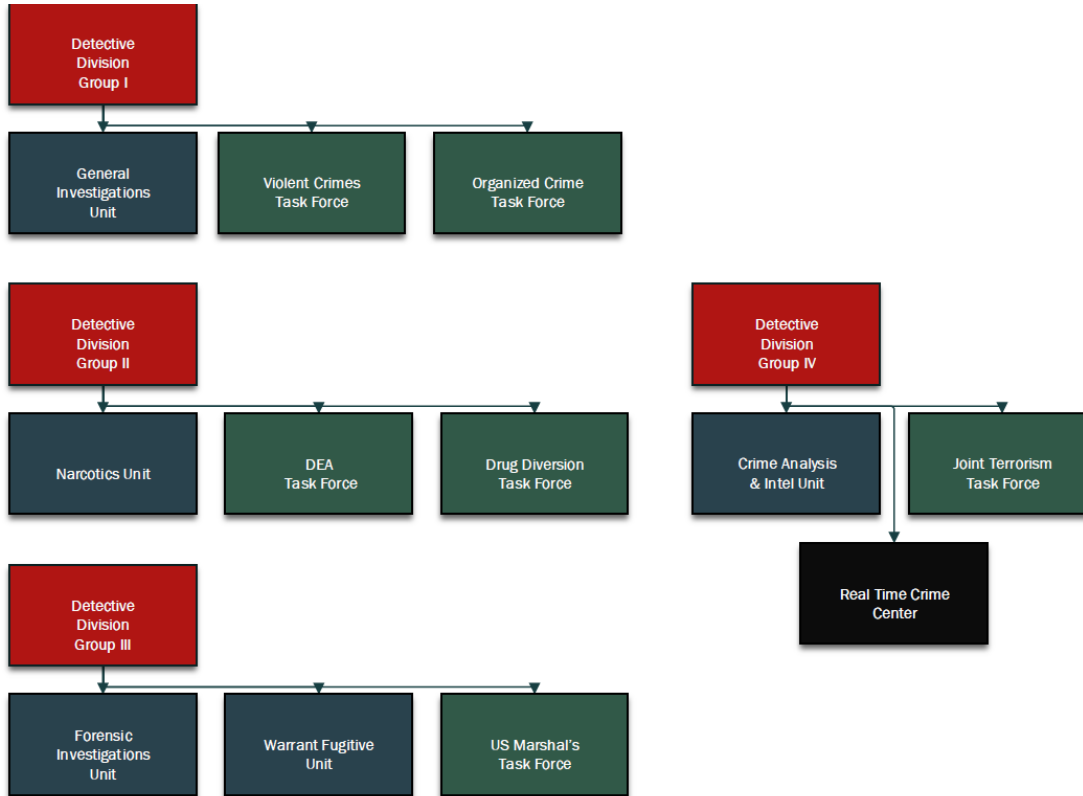
Chief Inspector John Hodges

Detective Division

Lieutenant James Palanzo

Monthly Indicators

	Apr 2021	Apr 2022	Net Change	% Change	YTD 2021	YTD 2022	Net Change	% Change
FIU								
Crime Scenes	7	5	-2	-28.6%	20	26	6	30.0%
Digital Evidence	3	3	0	0.0%	12	7	-5	-41.7%
Firearms Cases	39	34	-5	-12.8%	112	124	12	10.7%
Firearms Examined	28	66	38	135.7%	83	222	139	167.5%
Latent Print Cases	22	29	7	31.8%	86	103	17	19.8%
GIU								
Cases	112	118	6	5.4%	403	462	59	14.6%
Arrests	20	17	-3	-15.0%	62	83	21	33.9%
Juveniles	20	6	-14	-70.0%	36	42	6	16.7%
Narco								
Cases	4	15	11	275.0%	19	35	16	84.2%
Arrests	6	12	6	100.0%	18	20	2	11.1%
WFU								
Cases	25	212	187	748.0%	121	412	291	240.5%
Arrests	16	15	-1	-6.3%	61	56	-5	-8.2%
RTC DATA	(New Cases)							
RTC	737	746	9	1.2%	1435	3152	1717	119.7%
JTTF	22	1	-21	-95.5%	30	4	-26	-86.7%
HIDTA	30	51	21	70.0%	461	120	-341	-74.0%
RSO	29	19	-10	-34.5%	106	120	14	13.2%
Arrests	36	37	1	2.8%	87	191	104	119.5%

Investigative Services, Detective Division (cont.)

	2021	2022	Net
Civilians	1	3	2
Police Officer	7	7	0
Detective	50	50	0
Sergeant	6	7	1
Lieutenant	4	3	-1
Captain	1	1	0
Total	68	68	0
Rest./Light Duty	1	1	0
Ext Leave	0	1	1
Injured	0	0	0

Investigative Services, Detective Division (cont.)

RTC JOB	Apr 2022	YTD 2022
Amber Alert	0	0
RTC Request	51	253
RTC-3SI Activation	1	3
RTC-Alert Hot List	30	90
RTC-Broadcast	21	70
RTC-Bulletin	172	675
RTC-Daily Intel Report	30	123
RTC-Facial Recognition	16	83
RTC-HIDTA Request	1	9
RTC-Hot List Entry request	51	171
RTC-Intel Report	38	134
RTC-Jewelry Search	6	13
RTC-LPR Hit-File 1	77	441
RTC-LPR Hit-Terrorist	14	35
RTC-LPR Hit-Warrant	3	49
RTC-LPR Hotline	53	58
RTC-LPR Plate Search	64	328
RTC-Patrol Assist	5	19
RTC-Pattern Burglary	0	0
RTC-Pattern Car Larceny	0	0
RTC-Pattern Larceny	0	0
RTC-Pattern Robbery	0	0
RTC-Photo Array	3	34
RTC-Tips	10	28
RTC-Video Request	8	36
RTC-Workup Request	23	78

Totals 677 2730

Investigative Services, Detective Division (cont.)

Case Management	Apr 2022	Apr 2022	Apr 2022	Percentage of OJ Cases
Unit	Active Cases	Active OJ Cases	Total Cases Discovery Provided	
GIU	280	3	44	1.07%
FIU/Crime Scene	8	1	5	12.50%
FIU/Digital Evidence	9	1	0	11.11%
FIU/Firearms	61	56	38	91.80%
FIU/Latent Print	96	83	15	86.46%
Narcotics	110	98	0	89.09%
Warrants	247	226	0	91.50%
RSO Tracking				
Division Totals	811	468	102	57.71%

OFFICE OF THE DEPUTY COMMISSIONER

Deputy Commissioner Terrance Raynor

Civil Division

Captain Frank Donavan

Monthly Indicators

	Apr 2021	Apr 2022	Net Change	% Change	YTD 2021	YTD 2022	Net Change	% Change
Arrests	2	0	-2	-100.0%	2	1	-1	-50.0%
Evictions	0	25	25		2	75	73	3650.0%
Summons	46	48	2	4.3%	212	203	-9	-4.2%
Executions	217	437	220	101.4%	829	1383	554	66.8%
Total Monies Received	\$657,214	\$790,127	\$132,913	20.2%	2,813,117	3,972,418	1,159,301	41.2%
Fees & Poundage to County	\$54,193	\$58,372	\$4,179	7.7%	\$197,624	\$272,220	\$74,596	37.7%

Pistol Licensing Unit

Monthly Indicators

	Apr 2021	Apr 2022	Net Change	% Change	YTD 2021	YTD 2022	Net Change	% Change
New Application	123	165	42	34.1%	481	504	23	4.8%
Restriction Amendment	14	2	-12	-85.7%	98	52	-46	-46.9%
Renewal Application	160	141	-19	-11.9%	668	836	168	25.1%
Weapons Recovered	12	9	-3	-25%	156	18	-138	-88.5%
Delinquent Holders	10904	10897	-7	-0.1%	10904	10897	-7	-0.1%

Office of the Deputy Commissioner (cont.)

Personnel Assigned			(Civil and Pistol)
	2021	2022	Diff
Civilian	11	9	-2
Police Officer	5	6	1
Detective	6	5	-1
Sergeant	2	2	0
Lieutenant	0	0	0
Captain	1	1	0
Total			0
Rest/Lgt Duty	1	1	0
Ext Leave	1	1	0
Injured	0	0	0

SUPPORT SERVICES BUREAU

Captain William McGuinness

*Lt. Maria Meliti
Lt. Michael Cindrich
Lt. Nicholas Alongi
Lt. Charles Geraci*

Monthly Indicators

	Apr 2021	Apr 2022	Net Change	% Change	YTD 2021	YTD 2022	Net Change	% Change
Academy								
Student Training Days	2,858	2,777	-81	-3%	4,657	9,728	5071	109%
UIST Students Trained	81	85	4	5%	135	262	127	94%
Courses Offered	66	65	-1	-2%	101	145	44	44%
Other Event Attendee Days	47	0	-47	-100%	0	0	0	
WCPD students trained	374	351	-23	-6%	583	876	293	50%
Other Dept. Students trained	734	699	-35	-5%	1185	1335	150	13%
Total Students Trained	1108	1050	-58	-5%	1768	2211	443	25%
Property								
Items Received	147	196	49	33%	701	663	-38	-5%
Items Released/Destroyed	129	790	661	512%	397	1,133	736	185%
Cash Received	\$0	\$5,292	\$5,292.00		\$7,345	\$18,125	\$10,780.48	147%
Cash Released	(\$7,110)	(\$7,483)	-\$373.36	5%	(\$7,193)	(\$16,798)	-\$9,605.84	134%
Impounds Received HQ	11	12	1	9%	41	46	5	12%
Impounds Released HQ	4	17	13	325%	29	55	26	90%
Impound Inventory HQ	42	30	-12	-29%	80	85	5	6%

Support Services Bureau, (cont.)

Records	Apr 2021	Apr 2022	Net Change	% Change	YTD 2021	YTD 2022	Net Change	% Change
FOIL Requests	34	38	4	12%	147	164	17	12%
Subpoenas Civil	1	3	2	200%	5	5	0	0%
Leaving the Scene Cases	40	38	-2	-5%	107	131	24	22%
Local Warrants Received	11	16	5	45%	21	71	50	238%
Local Warrants Returned	17	23	6	35%	83	91	8	10%
Impound Releases	77	86	9	12%	349	351	2	1%
Case Reports Processed	196	421	225	115%	795	1192	397	50%
Accident Reports Approved	293	303	10	3%	998	1094	96	10%
Accident Report Fees Rec'd	\$3,930	\$4,170	240	6%	\$14,040	\$15,615	1575	11%
Trials Scheduled	68	125	57	84%	106	504	398	375%
Orders of Protection Processed	48	40	-8	-17%	141	166	25	18%
Background Checks Run	91	68	-23	-25%	231	402	171	74%
Cases Sealed	50	52	2	4%	197	181	-16	-8%
Tickets (all categories) Forwarded	148	170	22	15%	857	722	-135	-16%

Staffing	2021	2022	Diff
Civilian	19	16	-3
Police Officer	5	6	1
Detective	3	4	1
Sergeant	4	4	0
Lieutenant	3	3	0
Captain	1	1	0
Total	35	34	-1
Rest./Light Duty	0	0	0
Ext Leave	0	0	0
Injured	1	0	-1

Discovery Compliance - WorkloadCases that Required Discovery

	Apr 2022	YTD 2022
PCU	6	77
Records	31	121
Other Dept. Students Trained		
As Percentage of Total Students		
Month	Year	
67%	60%	

Support Services Bureau, (cont.)