

# Department of Public Safety

## Monthly Report



May 2022

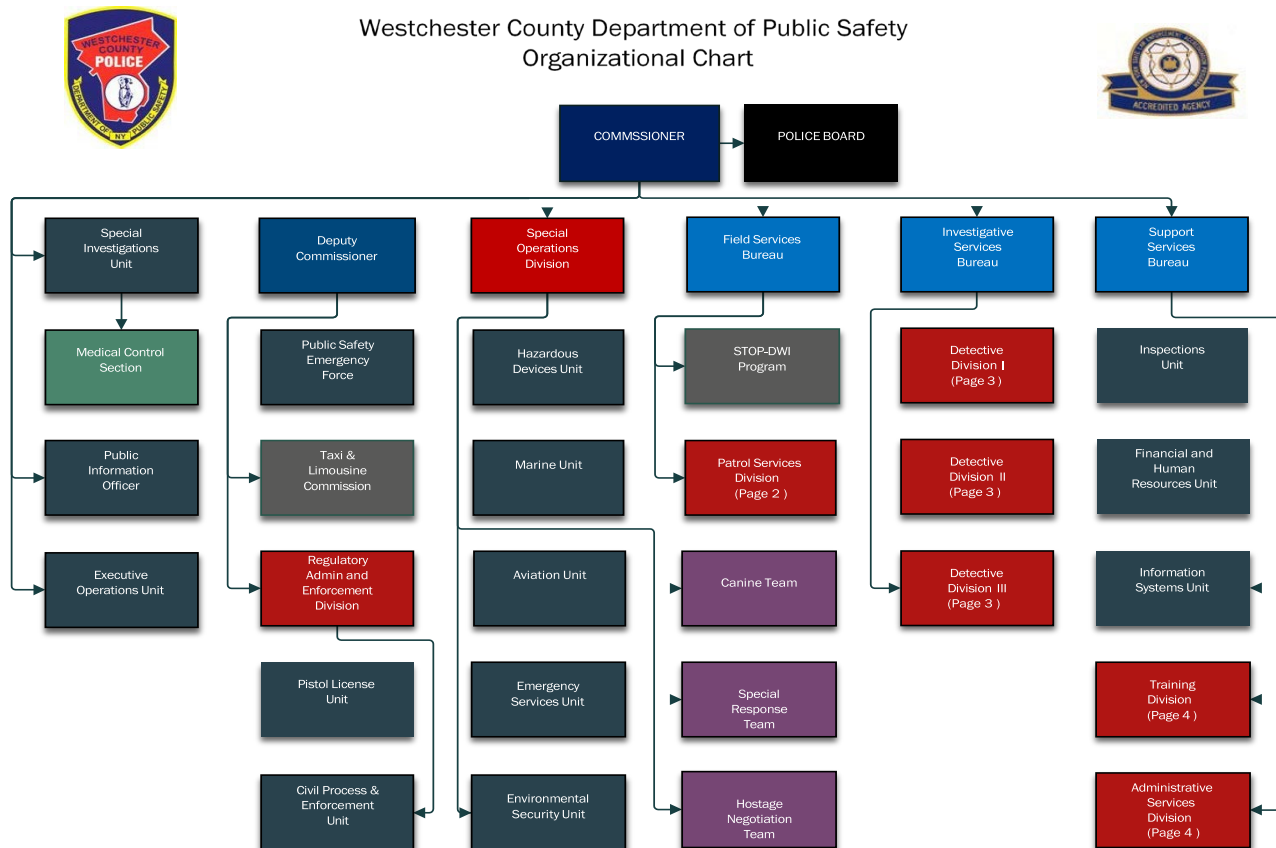
Commissioner Thomas A. Gleason

## MONTHLY REPORT

The Department of Public Safety is constantly reviewing its performance with respect to furthering its mission in a professional and efficient manner, consistent with the needs of the residents and visitors to Westchester County. The Department notes the following items of interest from the past month.

### Table of Contents

<b>MONTHLY OVERVIEW – DEPARTMENT WIDE</b> .....	<b>2</b>
<b>OFFICE OF THE COMMISSIONER</b> .....	<b>6</b>
<b>Special Investigations Unit</b> .....	<b>6</b>
<b>SPECIAL OPERATIONS DIVISION</b> .....	<b>7</b>
<b>FIELD SERVICES BUREAU</b> .....	<b>9</b>
<b>Patrol Services Division</b> .....	<b>10</b>
<b>INVESTIGATIVE SERVICES BUREAU</b> .....	<b>12</b>
<b>OFFICE OF THE DEPUTY COMMISSIONER</b> .....	<b>16</b>
<b>SUPPORT SERVICES BUREAU</b> .....	<b>18</b>



# MONTHLY OVERVIEW – DEPARTMENT WIDE

## Service Indicators

	May 2021	May 2022	Net Change	% Change	YTD 2021	YTD 2022	Net Change	% Change
Calls for Service	11378	11462	84	0.7%	52072	53280	1208	2.3%
Traffic Stops	1265	1411	146	11.5%	6406	6040	-366	-5.7%
Accident Reports	287	285	-2	-0.7%	1269	1369	100	7.9%
Dept Vehicle Accidents	6	7	1	16.7%	23	34	11	47.8%
Overtime Hrs.	13,915	13,698	-217	-1.6%	50,904	45,965	-4939	-9.7%

## Summons

	May 2021	May 2022	Net Change	% Change	YTD 2021	YTD 2022	Net Change	% Change
Field Appearance Tickets	42	61	19	45.2%	176	173	-3	-1.7%
Simplified Traffic Informations	1360	1482	122	9.0%	7500	6710	-790	-10.5%
Taxi & Limo Comm Violations	378	609	231	61.1%	1466	1784	318	21.7%
Marine	4	0	-4	-100.0%	8	0	-8	-100.0%
Total	1784	2152	368	20.6%	9150	8667	-483	-5.3%

Monthly Overview (cont.)**UCR Arrests**

	May 2021	May 2022	Net Change	% Change	YTD 2021	YTD 2022	Net Change	% Change
Murder (1a)	1	0	-1	-100.0%	2	1	-1	-50.0%
Forcible Rape (2.1)	0	1	1		0	1	1	
Robbery (3)	0	2	2		2	5	3	150.0%
Fel Assault (4)	4	0	-4	-100.0%	12	15	3	25.0%
Burglary (5.1)	0	0	0		5	4	-1	-20.0%
Larceny (6)	5	11	6	120.0%	34	65	31	91.2%
Motor Veh Theft (7)	1	3	2	200.0%	9	6	-3	-33.3%
Total	11	17	6	54.5%	64	97	33	51.6%

**Other Arrests**

	May 2021	May 2022	Net Change	% Change	YTD 2021	YTD 2022	Net Change	% Change
Narcotics	6	9	3	50.0%	28	37	9	32.1%
Dangerous Weapon	6	5	-1	-16.7%	15	34	19	126.7%
DWI/ DWAI	11	20	9	81.8%	73	95	22	30.1%
Total	23	34	11	47.8%	116	166	50	43.1%

Monthly Overview (cont.)UCR Crimes

	May 2021	May 2022	Net Change	% Change	YTD 2021	YTD 2022	Net Change	% Change
Murder (1a)	0	0	0		0	0	0	
Forcible Rape (2.1)	0	0	0		0	0	0	
Robbery	0	0	0		1	0	-1	-100.0%
Fel Assault (4)	0	0	0		1	1	0	0.0%
Burglary (5.1)	0	1	1		3	2	-1	-33.3%
Larceny (6)	8	11	3	37.5%	41	63	22	53.7%
Motor Veh Theft (7)	1	0	-1	-100.0%	4	3	-1	-25.0%
Total	9	12	3	33.3%	50	69	19	38.0%

Arrests Dept. Wide

	May 2021	May 2022	Net Change	% Change	YTD 2021	YTD 2022	Net Change	% Change
Felony	30	60	30	100.0%	184	285	101	54.9%
Misdemeanor	60	70	10	16.7%	290	311	21	7.2%
Violation	1	4	3	300.0%	6	7	1	16.7%
Infraction	2	4	2	100.0%	10	18	8	80.0%
Total	93	138	45	48.4%	490	621	131	26.7%

**Department Wide Overtime Analysis**

	Total Overtime YTD	(-) Reimbursable	Net Overtime	% YTD Allotment	2022 Allotment	2021 Allotment	2021 Actual	Last Year Percentage
Commissioner	254		254	54.1%	470	800	231	28.8%
Dep Commissioner	48		48	9.4%	513	500	125	25.0%
Patrol Services	33,583		33,583	52.2%	64,355	60,623	26,256	43.3%
Special Operations	8,210		8,210	53.3%	15,403	14,490	6,973	48.1%
Invest. Services	12,767		12,767	77.6%	16,461	15,784	6,596	41.8%
Support Services	4,144		4,144	79.5%	5,210	4,137	984	23.8%
<b>Total OT Hours</b>	<b>59,006</b>	<b>0</b>	<b>59,006</b>	<b>57.6%</b>	<b>102,412</b>	<b>96,334</b>	<b>41,164</b>	<b>42.7%</b>
				Last Year Reimbursable	43,453			

							Month	YTD 2022	
							Discovery Compliance	41	316
	Total Overtime YTD	(-) Reimbursable	Net Overtime	% YTD Allotment	2020 Allotment	COVID-19 OT	389	3066	
If Reimbursed OT Factored	59,006	20,076	38,930	38%	102,412	Civil Unrest	0	0	
Reimbursable Breakdown (Including COVID)						FOIL OT	0	35	

Not on Tax Levy		Offsets Tax Levy	
Municipal	1,304	Inter-Dept	10,306
Grants	2,890	Outside	1,470
Sum	4,193	Parks & Playland	1,041
		Sum	12,817

# OFFICE OF THE COMMISSIONER

## Thomas A. Gleason

### Special Investigations Unit

*Lt Jeffrey Weiss*

#### Monthly Indicators

	May 2021	May 2022	Net Change	% Change	YTD 2021	YTD 2022	Net Change	% Change
Civilian Complaints	1	1	0	0.0%	6	4	-2	-33.3%
Command Disciplines	0	0	0		1	2	1	100.0%
Administrative Complaint	0	1	1		3	7	4	133.3%
SIU Cases	0	0	0		7	1	-6	-85.7%
LIT Cases	0	3	3		4	10	6	150.0%
OPR Cases	1	0	-1	-100.0%	1	3	2	200.0%
LOD Cases	4	7	3	75.0%	22	35	13	59.1%
Admin. Entries	0	3	3		19	23	4	21.1%

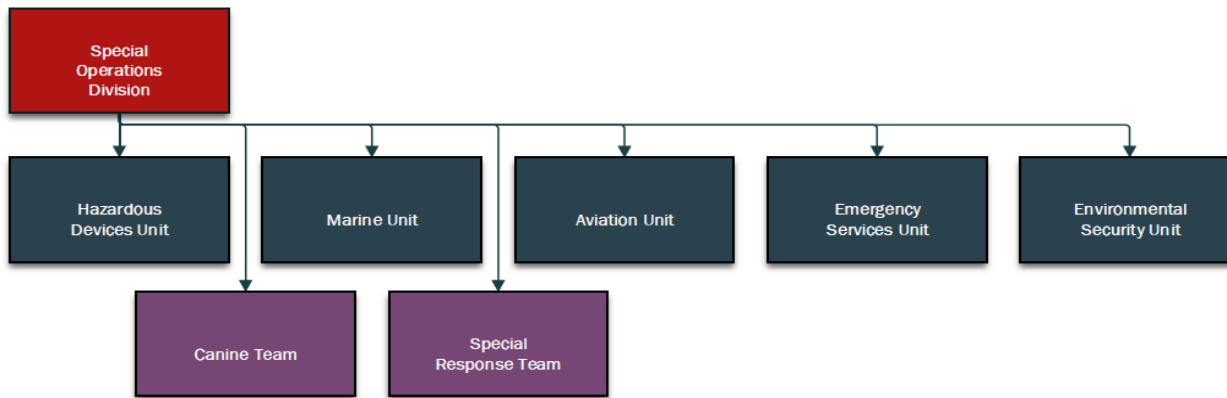
#### Medical Control

	May 2021	May 2022	Net Change	% Change	YTD 2021	YTD 2022	Net Change	% Change
Officers Out	7	6	-1	-14.3%			0	
Days Lost	143	93	-50	-35.0%	879	550	-329	-37.4%

**SPECIAL OPERATIONS DIVISION****Chief Inspector James Luciano****Lt. Paul Cusano****Monthly Indicators**

	May 2021	May 2022	Net Change	% Change	YTD 2021	YTD 2022	Net Change	% Change
<b>Aviation</b>								
Missions	40	34	-6	-15.0%	146	189	43	29.5%
Events	1606	593	-1013	-63.1%	5672	5574	-98	-1.7%
<b>HDU</b>								
Deployments	5	6	1	20.0%	18	32	14	77.8%
Events	44	22	-22	-50.0%	216	89	-127	-58.8%
<b>K9</b>								
Narco	5	11	6	120.0%	34	38	4	11.8%
Tracking	9	9	0	0.0%	33	38	5	15.2%
Arson	3	5	2	66.7%	27	32	5	18.5%
Explosive	172	159	-13	-7.6%	846	816	-30	-3.5%
<b>SRT</b>								
Deployments	4	2	-2	-50.0%	7	13	6	85.7%
Events	7	6	-1	-14.3%	21	35	14	66.7%
<b>HNT -Chief Insp Office</b>								
Deployments	1	3	2	200.0%	1	8	7	700.0%
<b>Marine</b>								
Events	444	355	-89	-20.0%	1676	1570	-106	-6.3%
Summons	4	7	3	75.0%	8	10	2	25.0%
Vessel Inspections	7	16	9	128.6%	13	19	6	46.2%
Search and Rescue	6	13	7	116.7%	20	23	3	15.0%
<b>ESU</b>								
Deployments	52	73	21	40.4%	208	309	101	48.6%
Events	54	75	21	38.9%	220	320	100	45.5%
<b>Environmental</b>								
Events	56	44	-12	-21.4%	255	239	-16	-6.3%



**Special Operations (cont.)**

Personnel Assigned	2021	2022	Diff
Captain	1	1	0
Civilian	1	1	0
Police Officer	7	9	2
Detective	5	4	-1
Sergeant	3	4	1
Lieutenant	1	1	0
<b>Total</b>	<b>18</b>	<b>20</b>	<b>2</b>

<b>SRT Call Outs</b>	May 2022	YTD 2022
Armed Persons	0	0
Barricades/EDP's	1	4
Warrant Executions	0	4
Dignitary/Escorts	0	0
Crit Infra Key Resource Patrols	0	1
OJ Mass Gatherings	0	1
Suspect/K-9 Search	1	3
Bldg. Search	0	0
<b>Totals</b>	<b>2</b>	<b>13</b>

**Special Operations (cont.)**

<b>Flight Time</b>	<b>Air 2</b>	<b>Air 3</b>	<b>Total</b>
<b>May 2022</b>	11.9	22.4	34.3
<b>YTD 2022</b>	31.1	182.2	213.3

## FIELD SERVICES BUREAU

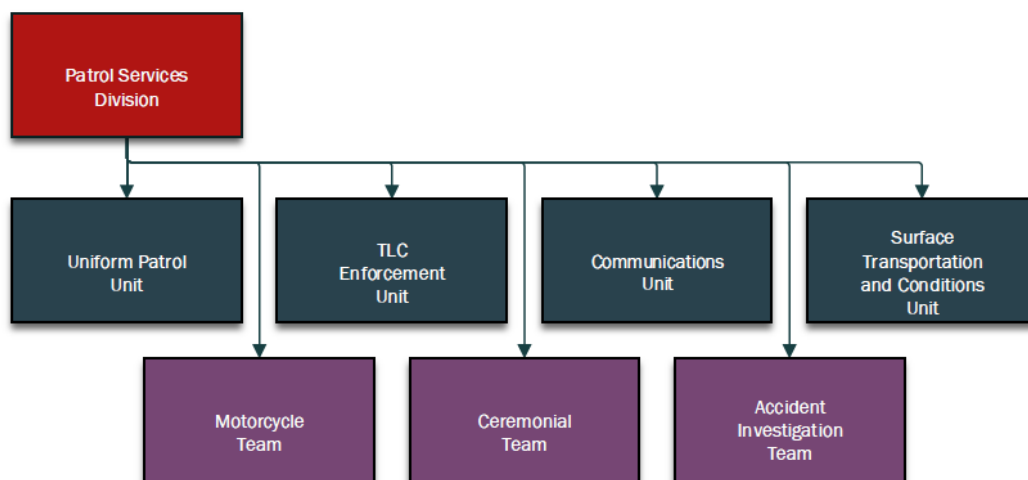
Chief Inspector Christopher Calabrese

Patrol Services Division

Captain James Greer

Monthly Indicators

	May 2021	May 2022	Net Change	% Change	YTD 2021	YTD 2022	Net Change	% Change
Events	11378	11462	84	0.7%	52072	53280	1208	2.3%
Summons	1689	2018	329	19.5%	9054	8420	-634	-7.0%
Arrests	50	68	18	36.0%	238	289	51	21.4%
DWI	11	20	9	81.8%	73	95	22	30.1%
Total Arrests	61	88	27	44.3%	311	384	73	23.5%
Communications Calls Received	11309	10356	-953	-8.4%	49198	47948	-1250	-2.5%
Communications 911 Calls	1529	1123	-406	-26.6%	6872	7314	442	6.4%
Accidents	287	285	-2	-0.7%	1269	1369	100	7.9%
PSEF Details	2	12	10	500.0%	12	26	14	116.7%
<b>Parkways</b>								
Events	2931	2439	-492	-16.8%	10679	11508	829	7.8%
Summons	1194	1219	25	2.1%	6205	5440	-765	-12.3%
Arrests	46	55	9	19.6%	254	307	53	20.9%
<b>Municipal</b>								
Events	1876	2708	832	44.3%	9670	12828	3158	32.7%
Summons	261	246	-15	-5.7%	1719	1125	-594	-34.6%
Arrests	12	12	0	0.0%	36	42	6	16.7%
<b>Airport</b>								
Events	2035	1844	-191	-9.4%	8431	8865	434	5.1%
Summons	43	62	19	44.2%	253	499	246	97.2%
Arrests	0	1	1		2	4	2	100.0%
<b>Parks</b>								
Events	1314	1023	-291	-22.1%	3959	3426	-533	-13.5%
Summons	19	167	148	778.9%	72	187	115	159.7%
Arrests	0	7	7		2	7	5	250.0%

**Field Services, Patrol Services (cont.)****Personnel Assigned****Discovery Workload**

	May 2021	May 2022	Diff		May 2021	May 2022
Civilian	8	9	1	New Patrol Cases	30	44
Commo Op	14	14	0	Closed Patrol Cases	41	50
Sr Commo Op	5	5	0	Closed Multi Media Requests	159	167
Commo PO	0	2	2	OT Hours	16	2
Police Officer	124	118	-6	<b><u>Discovery Staffing</u></b>		-
Detective	3	1	-2	-	-	-
Sergeant	24	26	2			
Lieutenant	10	11	1	Lt.'s	1	
Captain	1	1	0	Sgt.'s	0	
<b>Total</b>	<b>189</b>	<b>187</b>	<b>-2</b>	P.O.'s	1	
Rest./Light Duty	1	7	6	Civilians	1	
Ext Leave	3	2	-1	Total	3	
Injured	0	1	1			

# INVESTIGATIVE SERVICES BUREAU

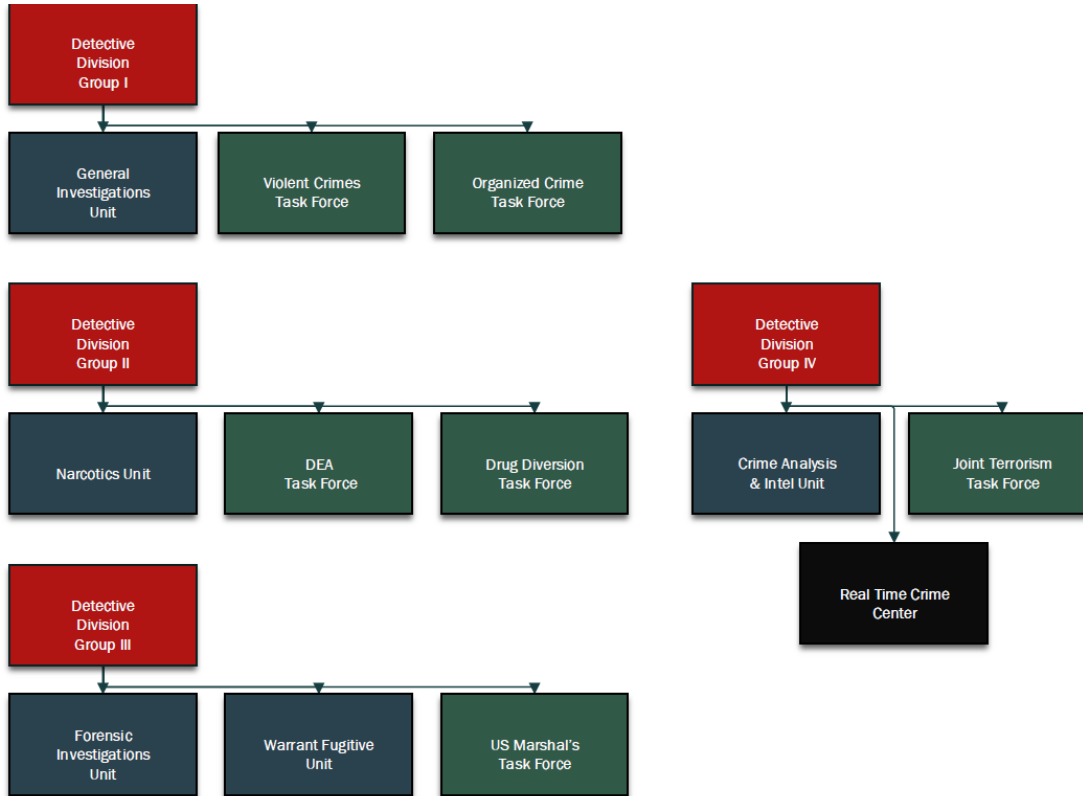
Chief Inspector John Hodges

Detective Division

Lieutenant James Palanzo

## Monthly Indicators

	May 2021	May 2022	Net Change	% Change	YTD 2021	YTD 2022	Net Change	% Change
<b>FIU</b>								
Crime Scenes	1	2	1	100.0%	21	28	7	33.3%
Digital Evidence	1	2	1	100.0%	13	9	-4	-30.8%
Firearms Cases	37	25	-12	-32.4%	149	149	0	0.0%
Firearms Examined	19	29	10	52.6%	102	251	149	146.1%
Latent Print Cases	29	16	-13	-44.8%	115	119	4	3.5%
<b>GIU</b>								
Cases	103	114	11	10.7%	506	576	70	13.8%
Arrests	13	9	-4	-30.8%	75	92	17	22.7%
Juveniles	7	5	-2	-28.6%	43	47	4	9.3%
<b>Narco</b>								
Cases	3	13	10	333.3%	21	48	27	128.6%
Arrests	5	4	-1	-20.0%	20	24	4	20.0%
<b>WFU</b>								
Cases	42	133	91	216.7%	165	546	381	230.9%
Arrests	14	27	13	92.9%	75	86	11	14.7%
<b>RTC DATA</b>	(New Cases)							
RTC	812	881	69	8.5%	2247	4033	1786	79.5%
JTTF	11	3	-8	-72.7%	41	7	-34	-82.9%
HIDTA	11	71	60	545.5%	472	191	-281	-59.5%
RSO	28	28	0	0.0%	134	148	14	10.4%
Arrests	19	35	16	84.2%	106	226	120	113.2%

**Investigative Services, Detective Division (cont.)**

	2021	2022	Net
<b>Civilians</b>	1	3	2
<b>Police Officer</b>	7	7	0
<b>Detective</b>	50	47	-3
<b>Sergeant</b>	6	7	1
<b>Lieutenant</b>	4	3	-1
<b>Captain</b>	1	1	0
<b>Total</b>	68	65	-3
<b>Rest./Light Duty</b>	1	1	0
<b>Ext Leave</b>	0	1	1
<b>Injured</b>	0	0	0

**Investigative Services, Detective Division (cont.)**

<b>RTC JOB</b>	<b>May 2022</b>	<b>YTD 2022</b>
Amber Alert	0	<b>0</b>
RTC Request	59	<b>312</b>
RTC-3SI Activation	1	<b>4</b>
RTC-Alert Hot List	21	<b>111</b>
RTC-Broadcast	21	<b>91</b>
RTC-Bulletin	222	<b>897</b>
RTC-Daily Intel Report	25	<b>148</b>
RTC-Facial Recognition	22	<b>105</b>
RTC-HIDTA Request	5	<b>14</b>
RTC-Hot List Entry request	60	<b>231</b>
RTC-Intel Report	42	<b>176</b>
RTC-Jewelry Search	5	<b>18</b>
RTC-LPR Hit-File 1	104	<b>545</b>
RTC-LPR Hit-Terrorist	25	<b>60</b>
RTC-LPR Hit-Warrant	12	<b>61</b>
RTC-LPR Hotline	2	<b>60</b>
RTC-LPR Plate Search	81	<b>409</b>
RTC-Patrol Assist	9	<b>28</b>
RTC-Pattern Burglary	0	<b>0</b>
RTC-Pattern Car Larceny	0	<b>0</b>
RTC-Pattern Larceny	0	<b>0</b>
RTC-Pattern Robbery	0	<b>0</b>
RTC-Photo Array	4	<b>38</b>
RTC-Tips	15	<b>43</b>
RTC-Video Request	9	<b>45</b>
RTC-Workup Request	16	<b>94</b>

**Totals                      760                      3490**

Investigative Services, Detective Division (cont.)

<b>Case Management</b>	<b>May 2022</b>	<b>May 2022</b>	<b>May 2022</b>	<b>Percentage of OJ Cases</b>
<b>Unit</b>	<b>Active Cases</b>	<b>Active OJ Cases</b>	<b>Total Cases Discovery Provided</b>	
<b>GIU</b>	<b>298</b>	<b>2</b>	<b>25</b>	<b>0.67%</b>
<b>FIU/Crime Scene</b>	<b>6</b>	<b>1</b>	<b>5</b>	<b>16.67%</b>
<b>FIU/Digital Evidence</b>	<b>8</b>	<b>1</b>	<b>3</b>	<b>12.50%</b>
<b>FIU/Firearms</b>	<b>53</b>	<b>48</b>	<b>32</b>	<b>90.57%</b>
<b>FIU/Latent Print</b>	<b>79</b>	<b>68</b>	<b>23</b>	<b>86.08%</b>
<b>Narcotics</b>	<b>119</b>	<b>102</b>	<b>0</b>	<b>85.71%</b>
<b>Warrants</b>	<b>317</b>	<b>302</b>	<b>0</b>	<b>95.27%</b>
<b>RSO Tracking</b>	<b>100</b>			
<b>Division Totals</b>	<b>980</b>	<b>524</b>	<b>88</b>	<b>53.47%</b>



## OFFICE OF THE DEPUTY COMMISSIONER

Deputy Commissioner Terrance Raynor

## Civil Division

Captain Frank Donavan

Monthly Indicators

	May 2021	May 2022	Net Change	% Change	YTD 2021	YTD 2022	Net Change	% Change
Arrests	0	0	0		2	1	-1	-50.0%
Evictions	0	0	0		2	75	73	3650.0%
Summons	37	59	22	59.5%	249	262	13	5.2%
Executions	234	247	13	5.6%	1063	1630	567	53.3%
Total Monies Received	\$580,256	\$850,014	\$269,758	46.5%	3,393,373	4,822,432	1,429,059	42.1%
Fees & Poundage to County	\$54,296	\$76,986	\$22,690	41.8%	\$251,920	\$349,207	\$97,287	38.6%

## Pistol Licensing Unit

Monthly Indicators

	May 2021	May 2022	Net Change	% Change	YTD 2021	YTD 2022	Net Change	% Change
New Application	130	166	36	27.7%	611	701	90	14.7%
Restriction Amendment	21	31	10	47.6%	119	119	0	0.0%
Renewal Application	241	322	81	33.6%	909	1132	223	24.5%
Weapons Recovered	2	17	15	750%	158	35	-123	-77.8%
Delinquent Holders	10901	10900	-1	0.0%	10901	10900	-1	0.0%

Office of the Deputy Commissioner (cont.)

<b>Personnel Assigned</b>			(Civil and Pistol)
	2021	2022	Diff
Civilian	11	9	-2
Police Officer	5	6	1
Detective	6	5	-1
Sergeant	2	2	0
Lieutenant	0	0	0
Captain	1	1	0
<b>Total</b>			<b>0</b>
Rest/Lgt Duty	1	1	0
Ext Leave	1	1	0
Injured	0	0	0

## SUPPORT SERVICES BUREAU

Captain William McGuinness

*Lt. Maria Meliti*  
*Lt. Michael Cindrich*  
*Lt. Nicholas Alongi*  
*Lt. Charles Geraci*

**Monthly Indicators**

	May 2021	May 2022	Net Change	% Change	YTD 2021	YTD 2022	Net Change	% Change
<b>Academy</b>								
Student Training Days	1,864	2,333	469	25%	6,521	12,061	5540	85%
UIST Students Trained	226	41	-185	-82%	307	303	-4	-1%
Courses Offered	35	33	-2	-6%	101	175	74	73%
Other Event Attendee Days	0	0	0		47	0	-47	-100%
WCPD students trained	313	175	-138	-44%	687	1051	364	53%
Other Dept. Students trained	508	477	-31	-6%	1242	1812	570	46%
Total Students Trained	821	652	-169	-21%	1929	2563	634	33%
<b>Property</b>								
Items Received	74	90	16	22%	775	753	-22	-3%
Items Released/Destroyed	69	1285	1216	1762%	466	2,418	1952	419%
Cash Received	\$3,196	\$0	-\$3,196.00	-100%	\$10,541	\$18,125	\$7,584.48	72%
Cash Released	(\$187)	(\$95)	\$92.20	-49%	(\$7,380)	(\$16,893)	-\$9,513.64	129%
Impounds Received HQ	0	4	4		41	50	9	22%
Impounds Released HQ	8	11	3	38%	37	66	29	78%
Impound Inventory HQ	34	23	-11	-32%	80	89	9	11%

Support Services Bureau, (cont.)

Records	May 2021	May 2022	Net Change	% Change	YTD 2021	YTD 2022	Net Change	% Change
FOIL Requests	27	38	11	41%	174	202	28	16%
Subpoenas Civil	1	0	-1	-100%	144	5	-139	-97%
Leaving the Scene Cases	37	34	-3	-8%	144	165	21	15%
Local Warrants Received	6	12	6	100%	27	83	56	207%
Local Warrants Returned	24	117	93	388%	107	208	101	94%
Impound Releases	78	90	12	15%	427	441	14	3%
Case Reports Processed	215	356	141	66%	1010	1548	538	53%
Accident Reports Approved	286	287	1	0%	1284	1381	97	8%
Accident Report Fees Rec'd	\$3,450	\$3,240	-210	-6%	\$17,490	\$18,855	1365	8%
Trials Scheduled	158	199	41	26%	264	703	439	166%
Orders of Protection Processed	42	41	-1	-2%	183	207	24	13%
Background Checks Run	70	65	-5	-7%	301	467	166	55%
Cases Sealed	44	43	-1	-2%	241	224	-17	-7%
Tickets (all categories) Forwarded	207	220	13	6%	1064	942	-122	-11%

Staffing	2021	2022	Diff
Civilian	19	16	-3
Police Officer	5	6	1
Detective	3	4	1
Sergeant	4	4	0
Lieutenant	3	3	0
Captain	1	1	0
<b>Total</b>	<b>35</b>	<b>34</b>	<b>-1</b>
Rest./Light Duty	0	0	0
Ext Leave	0	0	0
Injured	1	0	-1

**Discovery Compliance - Workload****Cases that Required Discovery**

	May 2022	YTD 2022
PCU	6	77
Records	38	159
Other Dept. Students Trained		
As Percentage of Total Students		
<b>Month</b>	<b>Year</b>	
73%	71%	

Support Services Bureau, (cont.)

