

Department of Public Safety

Monthly Report



June 2022

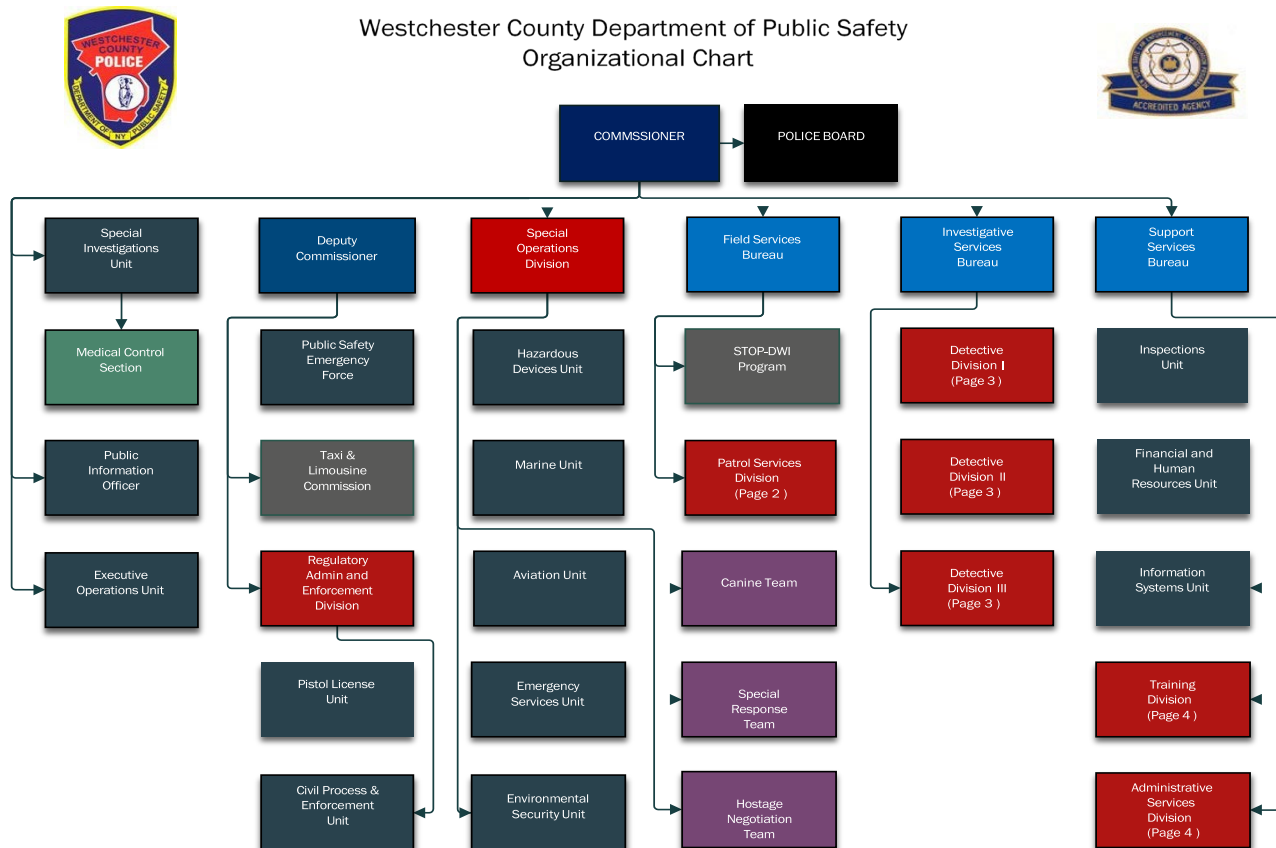
Commissioner Terrance Raynor

MONTHLY REPORT

The Department of Public Safety is constantly reviewing its performance with respect to furthering its mission in a professional and efficient manner, consistent with the needs of the residents and visitors to Westchester County. The Department notes the following items of interest from the past month.

Table of Contents

MONTHLY OVERVIEW – DEPARTMENT WIDE	2
OFFICE OF THE COMMISSIONER	6
Special Investigations Unit	6
SPECIAL OPERATIONS DIVISION	7
FIELD SERVICES BUREAU	9
Patrol Services Division	9
INVESTIGATIVE SERVICES BUREAU	11
OFFICE OF THE DEPUTY COMMISSIONER	15
SUPPORT SERVICES BUREAU	17



MONTHLY OVERVIEW – DEPARTMENT WIDE

Service Indicators

	June 2021	June 2022	Net Change	% Change	YTD 2021	YTD 2022	Net Change	% Change
Calls for Service	11356	12148	792	7.0%	63428	65428	2000	3.2%
Traffic Stops	1033	1316	283	27.4%	7439	7356	-83	-1.1%
Accident Reports	293	293	0	0.0%	1562	1662	100	6.4%
Dept Vehicle Accidents	4	6	2	50.0%	27	40	13	48.1%
Overtime Hrs.	14,339	15,216	878	6.1%	78,111	74,271	-3839	-4.9%

Summons

	June 2021	June 2022	Net Change	% Change	YTD 2021	YTD 2022	Net Change	% Change
Field Appearance Tickets	73	95	22	30.1%	249	268	19	7.6%
Simplified Traffic Informations	1334	1528	194	14.5%	8834	8238	-596	-6.7%
Taxi & Limo Comm Violations	305	651	346	113.4%	1771	2435	664	37.5%
Marine	10	2	-8	-80.0%	18	2	-16	-88.9%
Total	1722	2276	554	32.2%	10872	10943	71	0.7%

Monthly Overview (cont.)UCR Arrests

	June 2021	June 2022	Net Change	% Change	YTD 2021	YTD 2022	Net Change	% Change
Murder (1a)	1	1	0	0.0%	3	2	-1	-33.3%
Forcible Rape (2.1)	1	1	0	0.0%	1	2	1	100.0%
Robbery (3)	5	1	-4	-80.0%	7	6	-1	-14.3%
Fel Assault (4)	1	4	3	300.0%	13	19	6	46.2%
Burglary (5.1)	2	2	0	0.0%	7	6	-1	-14.3%
Larceny (6)	6	13	7	116.7%	40	78	38	95.0%
Motor Veh Theft (7)	3	1	-2	-66.7%	12	7	-5	-41.7%
Total	19	23	4	21.1%	83	120	37	44.6%

Other Arrests

	June 2021	June 2022	Net Change	% Change	YTD 2021	YTD 2022	Net Change	% Change
Narcotics	2	6	4	200.0%	30	43	13	43.3%
Dangerous Weapon	4	2	-2	-50.0%	19	36	17	89.5%
DWI/ DWAI	12	17	5	41.7%	85	112	27	31.8%
Total	18	25	7	38.9%	134	191	57	42.5%

Monthly Overview (cont.)UCR Crimes

	June 2021	June 2022	Net Change	% Change	YTD 2021	YTD 2022	Net Change	% Change
Murder (1a)	1	0	-1	-100.0%	1	0	-1	-100.0%
Forcible Rape (2.1)	0	0	0		0	0	0	
Robbery	0	0	0		1	0	-1	-100.0%
Fel Assault (4)	1	0	-1	-100.0%	2	1	-1	-50.0%
Burglary (5.1)	0	0	0		3	2	-1	-33.3%
Larceny (6)	3	14	11	366.7%	44	77	33	75.0%
Motor Veh Theft (7)	1	0	-1	-100.0%	5	3	-2	-40.0%
Total	6	14	8	133.3%	56	83	27	48.2%

Arrests Dept. Wide

	June 2021	June 2022	Net Change	% Change	YTD 2021	YTD 2022	Net Change	% Change
Felony	35	74	39	111.4%	219	359	140	63.9%
Misdemeanor	47	57	10	21.3%	337	368	31	9.2%
Violation	0	1	1		6	8	2	33.3%
Infraction	5	3	-2	-40.0%	15	21	6	40.0%
Total	87	135	48	55.2%	577	756	179	31.0%

Department Wide Overtime Analysis

	Total Overtime	% YTD Allotment	2022 Allotment	Last Year Allotment for YEAR	Last year Actual End of YEAR	Last Year Percentage
Commissioner	319	67.8%	470	800	1,004	125.5%
Dep Commissioner	68	13.2%	513	500	299	59.8%
Patrol Services	43,301	67.3%	64,355	60,623	100,604	166.0%
Special Operations	10,453	67.9%	15,403	14,490	17,942	123.8%
Invest. Services	15,449	93.8%	16,461	15,784	26,687	169.1%
Support Services	4,682	89.9%	5,210	4,137	8,810	213.0%
Total OT Hours	74,271	72.5%	102,412	96,334	155,346	161.3%

				Last Year with Reimbursable	155,346	72,013	46.4%
--	--	--	--	-----------------------------	---------	--------	-------

							Month	YTD 2022
						Discovery Compliance	86	402
						COVID-19 OT	94	3160
If Reimbursed OT Factored	74,271	24,993	49,278	48%	102,412	Civil Unrest	0	0
Reimbursable Breakdown (Including COVID)						FOIL OT	0	35

Not on Tax Levy		Offsets Tax Levy		Playland Flat Sum	
Municipal	1,709	Inter-Dept	12,697		Hours
Grants	3,826	Outside	1,804	YTD	357.5
Sum	5,535	Parks	1,892	Allotment	2,205.9
		Sum	16,392		

OFFICE OF THE COMMISSIONER

Terrance Raynor

Special Investigations Unit

Lt Jeffrey Weiss

Monthly Indicators

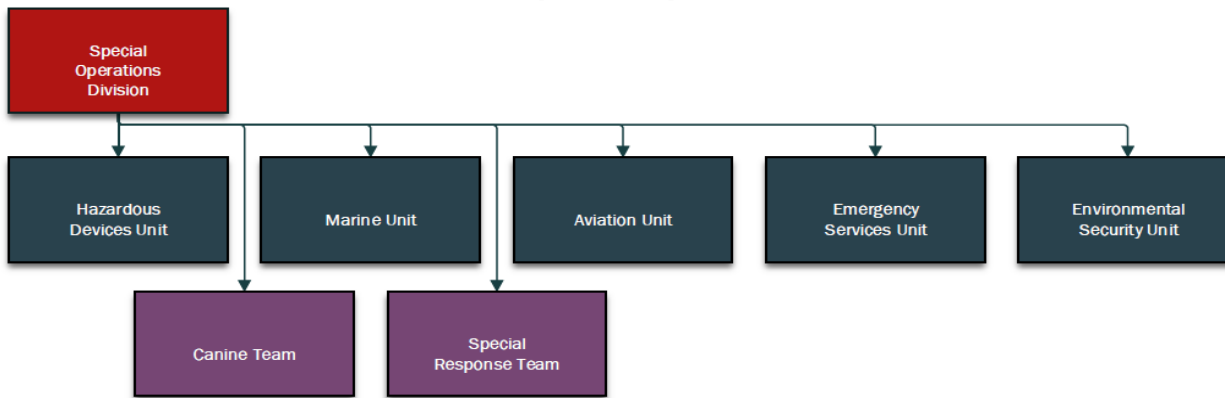
	June 2021	June 2022	Net Change	% Change	YTD 2021	YTD 2022	Net Change	% Change
Civilian Complaints	2	2	0	0.0%	8	6	-2	-25.0%
Command Disciplines	0	1	1		1	3	2	200.0%
Administrative Complaint	1	1	0	0.0%	4	8	4	100.0%
SIU Cases	1	1	0	0.0%	8	2	-6	-75.0%
LIT Cases	0	2	2		6	12	6	100.0%
OPR Cases	0	0	0		1	3	2	200.0%
LOD Cases	2	1	-1	-50.0%	24	42	18	75.0%
Admin. Entries	8	7	-1	-12.5%	27	30	3	11.1%

Medical Control

	June 2021	June 2022	Net Change	% Change	YTD 2021	YTD 2022	Net Change	% Change
Officers Out	7	3	-4	-57.1%			0	
Days Lost	148	103	-45	-30.4%	1027	654	-373	-36.3%

SPECIAL OPERATIONS DIVISION**Chief Inspector James Luciano****Lt. Paul Cusano****Monthly Indicators**

	June 2021	June 2022	Net Change	% Change	YTD 2021	YTD 2022	Net Change	% Change
Aviation								
Missions	59	51	-8	-13.6%	205	240	35	17.1%
Events	1555	1792	237	15.2%	7227	7366	139	1.9%
HDU								
Deployments	1	7	6	600.0%	19	39	20	105.3%
Events	15	15	0	0.0%	213	103	-110	-51.6%
K9								
Narco	8	14	6	75.0%	42	52	10	23.8%
Tracking	15	19	4	26.7%	48	57	9	18.8%
Arson	3	3	0	0.0%	30	35	5	16.7%
Explosive	191	175	-16	-8.4%	1037	991	-46	-4.4%
SRT								
Deployments	5	2	-3	-60.0%	12	15	3	25.0%
Events	8	6	-2	-25.0%	29	41	12	41.4%
HNT -Chief Insp Office								
Deployments	0	2	2		3	9	6	200.0%
Marine								
Events	499	417	-82	-16.4%	2175	1987	-188	-8.6%
Summons	10	8	-2	-20.0%	18	18	0	0.0%
Vessel Inspections	27	9	-18	-66.7%	40	28	-12	-30.0%
Search and Rescue	21	8	-13	-61.9%	38	31	-7	-18.4%
ESU								
Deployments	76	64	-12	-15.8%	284	373	89	31.3%
Events	78	66	-12	-15.4%	296	386	90	30.4%
Environmental								
Events	57	64	7	12.3%	318	303	-15	-4.7%

Special Operations (cont.)

Flight Time		Air 2	Air 3	Total
June 2022		25.6	30.2	55.8
YTD 2022		56.7	212.4	269.1

Personnel Assigned	2021	2022	Diff
Captain	1	1	0
Civilian	1	1	0
Police Officer	7	9	2
Detective	5	4	-1
Sergeant	3	4	1
Lieutenant	1	1	0
Total	18	20	2

SRT Call Outs	June 2022	YTD 2022
Armed Persons	0	0
Barricades/EDP's	0	4
Warrant Executions	1	5
Dignitary/Escorts	0	0
Crit Infra Key Resource Patrols	0	1
OJ Mass Gatherings	0	1
Suspect/K-9 Search	1	4
Bldg. Search	0	0
Totals	2	15

FIELD SERVICES BUREAU

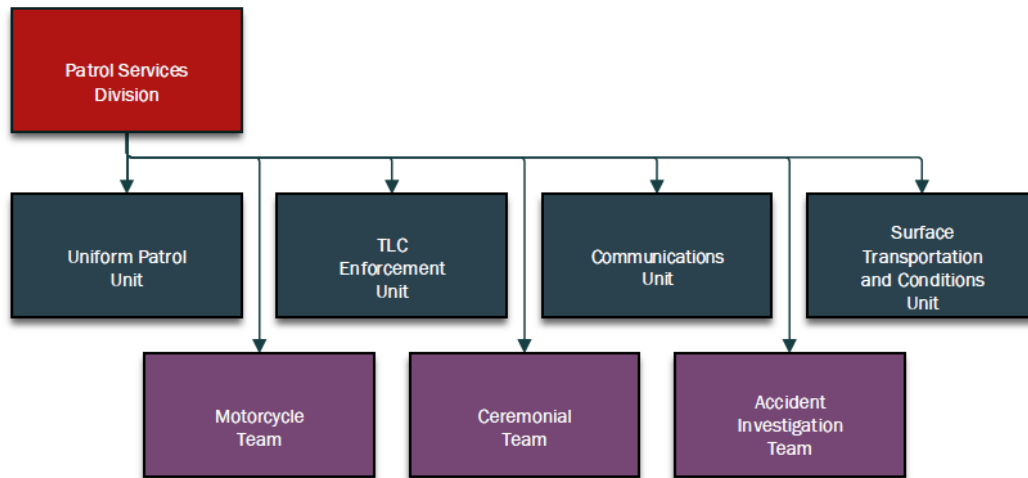
Chief Inspector Christopher Calabrese

Patrol Services Division

Captain James Greer

Monthly Indicators

	June 2021	June 2022	Net Change	% Change	YTD 2021	YTD 2022	Net Change	% Change
Events	11356	12148	792	7.0%	63428	65428	2000	3.2%
Summons	1549	2285	736	47.5%	10603	10705	102	1.0%
Arrests	44	51	7	15.9%	282	340	58	20.6%
DWI	12	17	5	41.7%	85	112	27	31.8%
Total Arrests	56	68	12	21.4%	367	452	85	23.2%
Communications Calls Received	11454	11521	67	0.6%	60642	59469	-1173	-1.9%
Communications 911 Calls	1805	1810	5	0.3%	8677	9124	447	5.2%
Accidents	293	293	0	0.0%	1562	1662	100	6.4%
PSEF Details	6	15	9	150.0%	18	41	23	127.8%
Parkways								
Events	2007	2271	264	13.2%	12686	13779	1093	8.6%
Summons	967	1056	89	9.2%	7172	6496	-676	-9.4%
Arrests	41	54	13	31.7%	295	361	66	22.4%
Municipal								
Events	2152	2754	602	28.0%	11822	15582	3760	31.8%
Summons	345	385	40	11.6%	2064	1510	-554	-26.8%
Arrests	9	12	3	33.3%	45	54	9	20.0%
Airport								
Events	1591	1648	57	3.6%	10022	10513	491	4.9%
Summons	67	48	-19	-28.4%	320	547	227	70.9%
Arrests	2	0	-2	-100.0%	4	4	0	0.0%
Parks								
Events	1698	1824	126	7.4%	5657	5250	-407	-7.2%
Summons	46	188	142	308.7%	118	375	257	217.8%
Arrests	0	0	0		2	7	5	250.0%

Field Services, Patrol Services (cont.)**Personnel Assigned****Discovery Workload**

	June 2021	June 2022	Diff		June 2021	June 2022
Civilian	8	9	1	New Patrol Cases	22	34
Commo Op	14	14	0	Closed Patrol Cases	22	29
Sr Commo Op	5	5	0	Closed Multi Media Requests	75	92
Commo PO	0	2	2	OT Hours	2	9
Police Officer	125	131	6	<u>Discovery Staffing</u>		
Detective	5	1	-4			
Sergeant	25	25	0			
Lieutenant	10	10	0	Lt.'s	1	
Captain	1	1	0	Sgt.'s	0	
Total	193	198	5	P.O.'s	1	
Rest./Light Duty	1	3	2	Civilians	1	
Ext Leave	2	2	0	Total	3	
Injured	0	3	3			

INVESTIGATIVE SERVICES BUREAU

Chief Inspector John Hodges

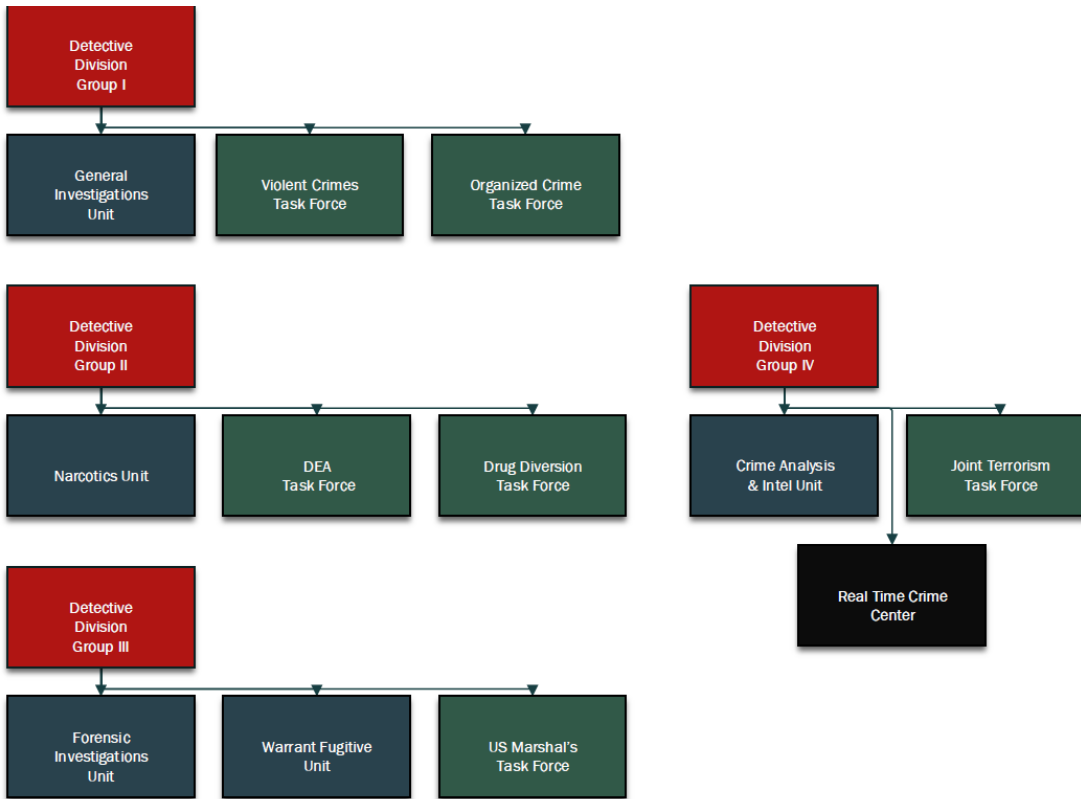
Detective Division

Lieutenant James Palanzo

Monthly Indicators

	June 2021	June 2022	Net Change	% Change	YTD 2021	YTD 2022	Net Change	% Change
FIU								
Crime Scenes	8	5	-3	-37.5%	29	33	4	13.8%
Digital Evidence	7	5	-2	-28.6%	22	14	-8	-36.4%
Firearms Cases	44	49	5	11.4%	198	198	0	0.0%
Firearms Examined	27	69	42	155.6%	129	320	191	148.1%
Latent Print Cases	39	33	-6	-15.4%	150	152	2	1.3%
GIU								
Cases	138	104	-34	-24.6%	644	566	-78	-12.1%
Arrests	12	17	5	41.7%	87	100	13	14.9%
Juveniles	4	5	1	25.0%	47	48	1	2.1%
Narco								
Cases	2	15	13	650.0%	24	63	39	162.5%
Arrests	0	22	22		23	46	23	100.0%
WFU								
Cases	53	67	14	26.4%	218	613	395	181.2%
Arrests	14	22	8	57.1%	89	105	16	18.0%
RTC DATA	(New Cases)							
RTC	798	847	49	6.1%	3039	4880	1841	60.6%
JTTF	7	0	-7	-100.0%	48	7	-41	-85.4%
HIDTA	38	61	23	60.5%	512	252	-260	-50.8%
RSO	35	18	-17	-48.6%	169	166	-3	-1.8%
Arrests	35	34	-1	-2.9%	141	260	119	84.4%

Investigative Services, Detective Division (cont.)



	2021	2022	Net
Civilians	3	2	-1
Police Officer	6	4	-2
Detective	50	50	0
Sergeant	6	7	1
Lieutenant	4	3	-1
Captain	1	0	-1
Total	67	64	-3
Rest./Light Duty	1	1	0
Ext Leave	0	1	1
Injured	0	0	0

Investigative Services, Detective Division (cont.)

RTC JOB	June 2022	YTD 2022
Amber Alert	0	0
RTC Request	75	387
RTC-3SI Activation	2	6
RTC-Alert Hot List	28	139
RTC-Broadcast	25	116
RTC-Bulletin	173	1070
RTC-Daily Intel Report	28	176
RTC-Facial Recognition	20	125
RTC-HIDTA Request	1	15
RTC-Hot List Entry request	50	281
RTC-Intel Report	34	210
RTC-Jewelry Search	4	22
RTC-LPR Hit-File 1	105	650
RTC-LPR Hit-Terrorist	18	78
RTC-LPR Hit-Warrant	17	78
RTC-LPR Hotline	42	102
RTC-LPR Plate Search	70	479
RTC-Patrol Assist	8	36
RTC-Pattern Burglary	1	1
RTC-Pattern Car Larceny	1	1
RTC-Pattern Larceny	0	0
RTC-Pattern Robbery	0	0
RTC-Photo Array	5	43
RTC-Tips	9	52
RTC-Video Request	5	50
RTC-Workup Request	21	115
Totals	742	4232

Investigative Services, Detective Division (cont.)

Case Management	June 2022	June 2022	June 2022	Percentage of OJ Cases
Unit	Active Cases	Active OJ Cases	Total Cases Discovery Provided	
GIU	317	2	32	0.63%
FIU/Crime Scene	7	1	2	14.29%
FIU/Digital Evidence	11	0	0	0.00%
FIU/Firearms	61	54	36	88.52%
FIU/Latent Print	66	57	48	86.36%
Narcotics	117	110	2	94.02%
Warrants	323	305	2	94.43%
RSO Tracking	100			
Division Totals	1002	529	122	52.79%

OFFICE OF THE DEPUTY COMMISSIONER

Commissioner Terrance Raynor

Civil Division

Captain Frank Donavan

Monthly Indicators

	June 2021	June 2022	Net Change	% Change	YTD 2021	YTD 2022	Net Change	% Change
Arrests	0	1	1		2	2	0	0.0%
Evictions	0	17	17		2	92	90	4500.0%
Summons	63	62	-1	-1.6%	312	324	12	3.8%
Executions	185	244	59	31.9%	1248	1874	626	50.2%
Total Monies Received	\$672,630	\$754,229	\$81,599	12.1%	4,066,002	5,576,661	1,510,658	37.2%
Fees & Poundage to County	\$47,729	\$52,099	\$4,369	9.2%	\$299,649	\$401,305	\$101,656	33.9%

Pistol Licensing Unit

Monthly Indicators

	June 2021	June 2022	Net Change	% Change	YTD 2021	YTD 2022	Net Change	% Change
New Application	128	104	-24	-18.8%	739	805	66	8.9%
Restriction Amendment	13	207	194	1492.3%	132	326	194	147.0%
Renewal Application	214	214	0	0.0%	1123	1346	223	19.9%
Weapons Recovered	2	23	21	1050%	160	63	-97	-60.6%
Delinquent Holders	10899	11000	101	0.9%	10899	11000	101	0.9%

Office of the Deputy Commissioner (cont.)

<u>Personnel Assigned</u>			(Civil and Pistol)
	2021	2022	Diff
Civilian	11	9	-2
Police Officer	5	6	1
Detective	6	5	-1
Sergeant	2	2	0
Lieutenant	0	0	0
Captain	1	1	0
Total			0
Rest/Lgt Duty	1	1	0
Ext Leave	1	1	0
Injured	0	0	0

SUPPORT SERVICES BUREAU

Captain William McGuinness

Lt. Maria Meliti
Lt. Michael Cindrich
Lt. Nicholas Alongi
Lt. Charles Geraci

Monthly Indicators

	June 2021	June 2022	Net Change	% Change	YTD 2021	YTD 2022	Net Change	% Change
Academy								
Student Training Days	2,019	1,845	-174	-9%	9,651	13,906	4255	44%
UIST Students Trained	140	22	-118	-84%	360	325	-35	-10%
Courses Offered	38	38	0	0%	256	277	21	8%
Other Event Attendee Days	0	0	0		0	0	0	
WCPD students trained	132	97	-35	-27%	819	912	93	11%
Other Dept. Students trained	448	389	-59	-13%	1690	1842	152	9%
Total Students Trained	821	652	-169	-21%	2509	2754	245	10%
Property								
Items Received	76	142	66	87%	851	895	44	5%
Items Released/Destroyed	204	2723	2519	1235%	670	5,141	4471	667%
Cash Received	\$1,290	\$0	-\$1,290.00	-100%	\$11,831	\$18,125	\$6,294.48	53%
Cash Released	(\$42)	(\$219)	-\$177.00	421%	(\$7,422)	(\$17,112)	-\$9,690.64	131%
Impounds Received HQ	8	2	-6	-75%	49	52	3	6%
Impounds Released HQ	11	10	-1	-9%	48	76	28	58%
Impound Inventory HQ	31	15	-16	-52%	88	91	3	3%

Support Services Bureau, (cont.)

Records	June 2021	June 2022	Net Change	% Change	YTD 2021	YTD 2022	Net Change	% Change
FOIL Requests	38	46	8	21%	212	248	36	17%
Subpoenas Civil	0	3	3		6	8	2	33%
Leaving the Scene Cases	27	39	12	44%	171	204	33	19%
Local Warrants Received	10	23	13	130%	37	106	69	186%
Local Warrants Returned	27	20	-7	-26%	134	228	94	70%
Impound Releases	90	72	-18	-20%	517	513	-4	-1%
Case Reports Processed	242	309	67	28%	1252	1857	605	48%
Accident Reports Approved	295	297	2	1%	1579	1678	99	6%
Accident Report Fees Rec'd	\$4,290	\$3,555	-735	-17%	\$21,780	\$22,410	630	3%
Trials Scheduled	156	262	106	68%	420	965	545	130%
Orders of Protection Processed	40	63	23	58%	223	270	47	21%
Background Checks Run	74	148	74	100%	375	615	240	64%
Cases Sealed	48	49	1	2%	241	273	32	13%
Tickets (all categories) Forwarded	256	117	-139	-54%	1320	1119	-201	-15%

Staffing	2021	2022	Diff
Civilian	19	17	-2
Police Officer	5	5	0
Detective	3	4	1
Sergeant	4	4	0
Lieutenant	3	3	0
Captain	1	1	0
Total	35	34	-1
Rest./Light Duty	0	0	0
Ext Leave	0	0	0
Injured	1	0	-1

Discovery Compliance - Workload**Cases that Required Discovery**

	June 2022	YTD 2022
PCU	6	77
Records	35	194
Other Dept. Students Trained		
As Percentage of Total Students		
Month	Year	
60%	67%	

Support Services Bureau, (cont.)

